

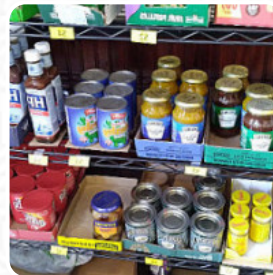


## Lands End Pasty Company Menu

<https://menuweb.menu>

1316 4th St SE, 55414, Minneapolis, US, United States

+16123154175 - <http://landsendpasty.com>



Here you can find the [menu](#) of **Lands End Pasty Company** in Minneapolis. At the moment, there are **21** meals and drinks on the menu.

# Lands End Pasty Company Menu



## Salads

BLUE CHEESE SALAD

## Starters & Salads

FRENCH FRIES

## Specialties

SHEPHERD'S PIE

## Hot Pies

SAUSAGE ROLL

## Mexican-American Food

EMPANADAS

## Restaurant Category

VEGETARIAN

## Dessert

BIKO

APPLE PIE

## Indian

CHICKEN CURRY

PEPPER CHICKEN

## These Types Of Dishes Are Being Served

PANINI

MEAT

CHICKEN

LAMB

## Ingredients Used

MUSHROOMS

BACON

PORK MEAT

CHEESE

BEEF

SAUSAGE

CARROTS

# Lands End Pasty Company

1316 4th St SE, 55414,  
Minneapolis, US, United States

### Opening Hours:

Tuesday 11:00-19:00  
Wednesday 11:00-19:00  
Thursday 11:00-19:00  
Friday 11:00-19:00  
Saturday 11:00-19:00

Made with [menuweb.menu](https://menuweb.menu)

