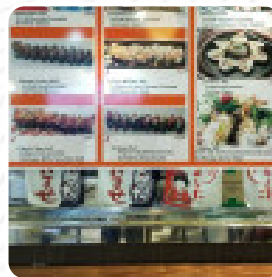




Oshima Japanese Cuisine Menu

<https://menulist.menu>
3301 184th St SW, Lynnwood I-98037-4797, United States
+14256403336



The menu of **Oshima Japanese Cuisine** from Lynnwood includes **20** menus. On average, *menus or drinks on [the menu](#)* cost about \$6.7. The categories can be viewed on the menu below.

Oshima Japanese Cuisine Menu



Sushi Rolls

SUSHI

Nigiri Sushi

TUNA SUSHI \$3.5

Special Roll

WASHINGTON ROLL \$9.0

Spezial-Nudeln

UDON

Sushi - Vorspeisen

SPICY SASHIMI BOWL \$10.5

Boxes

TUNA SASHIMI \$6.5

Sashimi Selection

SALMON SASHIMI \$5.8

Sushi Bar Entrees

CHIRASHI

Fresh Fish Rolls

HAWAIIAN ROLL \$8.5

Small Rice Bowls

UNADON \$11.5

Sushi Exclusive (8Stk.)

CRAZY SALMON SUSHI \$3.0

Sushi



SASHIMI

SPICY TUNA ROLL \$5.0

CALIFORNIA ROLL \$4.0

Ingredients Used

SCALLOPS

SCALLOP

TUNA

These Types Of Dishes Are Being Served

SALAD

SPICY TUNA

SOUP

Oshima Japanese Cuisine Menu



Oshima Japanese Cuisine

3301 184th St SW, Lynnwood I-
98037-4797, United States

Opening Hours:

Monday 10:30 -21:00
Tuesday 10:30 -21:00
Wednesday 10:30 -21:00
Thursday 10:30 -21:00
Friday 10:30 -21:00
Saturday 10:30 -21:00
Sunday 10:30 -21:00

Made with menulist.menu

 gallery image

