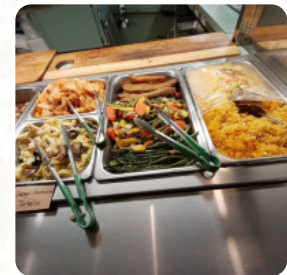
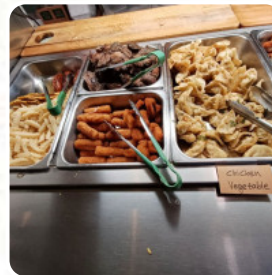




Kitchen Door Menu

<https://menulist.menu>
1975 New Hwy, Farmingdale, United States
+16312936997 - <http://kitchendoor.epipaysmarter.com/>



The Card of Kitchen Door from Farmingdale includes about **20** different menus and drinks. On average, you pay for a dish / drink about \$8.6.

Kitchen Door Menu



Soups

CHICKEN RAMEN \$8.0

Mains

VEGETARIAN BIBIMBAP \$9.0

Ramen

PORK RAMEN \$8.0

Mexican Dishes

BURRITO

Bibimbap

BEEF BIBIMBAP \$9.0

Spezial-Nudeln

UDON

Hot Drinks

COFFEE

Mixed Rice

BIBIMBAP

Sandwiches

CHICKEN CUTLET WITH BACON SANDWICH \$7.5

CHICKEN CUTLET SANDWICH

Deop-Bap

SPICY BEEF DEOP-BAP \$9.0

BEEF DEOP-BAP \$9.0

Ingredients Used

CHEESE

SEAFOOD

Uncategorized

BEEF SOONDUBU \$9.0

CHICKEN SOONDUBU \$9.0

These Types Of Dishes Are Being Served

TUNA STEAK

PANINI

SOUP

SALAD

Kitchen Door Menu



Kitchen Door

1975 New Hwy, Farmingdale,
United States

Opening Hours:
Monday 07:00 -14:55
Tuesday 07:00 -14:55
Wednesday 07:00 -14:55
Thursday 07:00 -14:55
Friday 07:00 -14:55

Made with menulist.menu

