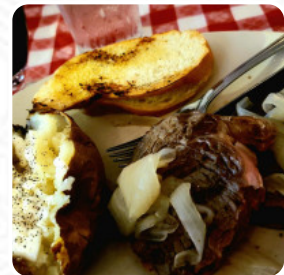
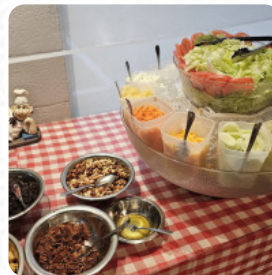




The Beefmastro Inn Menu

<https://menulist.menu>

2656 US-301 S, Wilson, 27893-6852, United States Of America, Clarendon County
+12522377343



A comprehensive [menu](#) of The Beefmastro Inn from Clarendon County covering all 7 courses and drinks can be found here on the menu. For *changing offers*, please get in touch via phone or use the contact details provided on the website.

The Beefmasto Inn Menu



Side Dishes

BAKED POTATO

Hot Drinks

TEA

Restaurant Category

STEAKHOUSE

Drinks

DRINKS

BEER

Steaks

RIBEYE STEAK

RIBEYE STEAK

Ingredients Used

POTATOES

ONION

TOMATOES

These Types Of Dishes Are Being Served

SALAD

BREAD

MEAT

TOSTADAS

SOUP

The Beefmasto Inn Menu



The Beefmasto Inn

2656 US-301 S, Wilson, 27893-6852, United States Of America, Clarendon County

Opening Hours:

Monday 04:30 -21:30
Tuesday 04:30 -21:30
Wednesday 04:30 -21:30
Thursday 04:30 -21:30
Friday 04:30 -22:00
Saturday 04:30 -22:00
Sunday 04:30 -21:30

Made with menulist.menu

 gallery image

