



4pcs Sashimi and one 8pcs sushi roll
Tuna Roll, California #2 Roll, Spicy Salmon Roll

ashi Bowl

\$2 for house spring salad

HIRASHI \$24.95

PCS ASSORTED SASHIMI ON A BED OF SUSHI RICE.

VE-FIN TUNA CHIRASHI \$29.95

5 BLUE-FIN TUNA, 2PCS SALMON, 2PCS YELLOW TAIL.

ED SALMON BOWL \$17.95

RED SALMON WITH AVOCADO ON A BED OF SUSHI RICE.

AVOCADO BOWL \$21.95

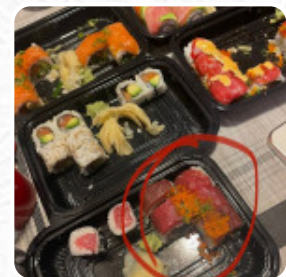
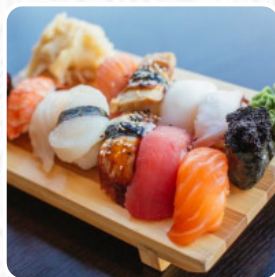
WITH AVOCADO ON A BED OF SUSHI RICE.

Oto Sushi Menu

<https://menulist.menu>

161st Avenue Northeast, Redmond, 98052, United States Of America

+14255585888 - <http://www.otoredmond.com/>



A complete [menu](#) of Oto [Sushi](#) from Redmond covering all **16** dishes and drinks can be found here on the menu. For **seasonal or weekly deals**, please get in touch via phone or use the contact details provided on the website.

Oto Sushi Menu



Sushi Rolls

SUSHI

Sushi

SASHIMI

Spezial-Nudeln

UDON

Sides

SOY SAUCE

These Types Of Dishes Are Being Served

FISH

SOUP

Japanese Specialties

SAKE

MISO SOUP

YAKISOBA

Restaurant Category

VEGETARIAN

GLUTEN FREE

VEGAN

Ingredients Used



LYCHEE

MISO

TUNA

YELLOWTAIL

Oto Sushi Menu



Oto Sushi

161st Avenue Northeast,
Redmond, 98052, United States
Of America

Opening Hours:

 gallery image