

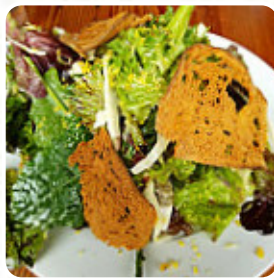
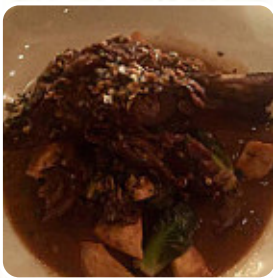


Clyde Common Menu

<https://menulist.menu>

1014 SW Stark St Portland, OR 97205-2610, United States

+15032283333 - <http://www.clydecommon.com/>



The restaurant from Portland offers **20 different menus and drinks on [the menu](#)** at an average price of \$18.8. Clyde Common, opened in 2007, is a restaurant in downtown Portland, OR that offers diverse comfort food and an award-winning bar program. The space is energizing and open with large windows looking out onto Harvey Milk Street. The bar is led by cocktail master Jeffrey Morgenthaler, making Clyde Common a popular spot for travelers and locals. Executive Chef Clayton Allen and the team focus on European and American traditions using ingredients sourced from the Pacific Northwest. Located inside the Ace Hotel, Clyde Common offers Happy Hour specials and late-night meals in a friendly and comfortable tavern atmosphere. Open for dinner all week.

Clyde Common Menu



Entrées

FRIED BRUSSELS SPROUTS \$8.0

Pasta

SQUID INK FETTUCCINE \$25.0

Lamb

LAMB SHANK

Vegetarian Dishes

CARROT CAKE \$8.0

Dessert

PETIT FOURS PLATE \$8.0

Starters

CHICKPEAS DELICATA \$12.0

From The Grill

RIBS

Our Cuts - No Shortcuts

T-BONE \$65.0

For Salads

GRILLED STEELHEAD \$25.0

Sides

CHEESE BOARD

Seafood & Chicken

DUNGENESS CRAB \$15.0

Ingredients Used

CHEESE

Snacks

CHEDDARWURST CROQUETTE \$7.0

GOLDIN ARTISAN GOAT CHEESE BOARD \$15.0

Drinks

DRINKS

GLASS OF WINE

These Types Of Dishes Are Being Served

SALAD

MEAT

TOSTADAS

LAMB

Clyde Common Menu



Clyde Common

1014 SW Stark St Portland, OR
97205-2610, United States

Opening Hours:

Monday 15:00 -00:00
Tuesday 15:00 -00:00
Wednesday 15:00 -00:00
Thursday 15:00 -00:00
Friday 15:00 -00:00
Saturday 15:00 -00:00
Sunday 15:00 -00:00

Made with menulist.menu

