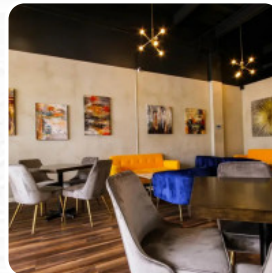
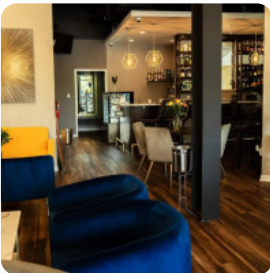




Sulit Coffee Wine Menu

<https://menulist.menu>

4150 Old Milton Pkwy Suite 120, Alpharetta, United States Of America
+16783369576,+14703955163 - <http://sulitcoffeeandwinebar.com/>



On this webpage, you can find the **complete [menu](#)** of **Sulit Coffee Wine** from Alpharetta. Currently, there are **18** meals and drinks up for grabs. For *changing offers*, please contact the restaurant owner directly. You can also contact them through their website. Sulit Coffee Wine Bar offers a unique and flavorful menu created by Executive Chef Ahmed Zayed. Located in the Alpharetta Johns Creek area, our cozy and relaxing environment is perfect for enjoying breakfast, lunch, or dinner. Visit us at the Shops At Old Milton, just 2 miles from The Avalon.

Sulit Coffee Wine Menu



Salads

GARDEN SALAD

Sauces

SALSA

Wine

BOTTLE OF WINE

Chicken Wings

WINGS

Hot Drinks

COFFEE

Coffee

CAPPUCCINO

Sides

CHEESE BOARD

Restaurant Category

DESSERT

Drinks

DRINKS

BEER

Ingredients Used

YOGURT

AVOCADO

CHEESE

GARLIC

These Types Of Dishes Are Being Served

BREAD

PANINI

SALAD

CHICKEN

Sulit Coffee Wine Menu



Sulit Coffee Wine

4150 Old Milton Pkwy Suite 120,
Alpharetta, United States Of
America

Opening Hours:

Tuesday 08:00-00:00
Wednesday 08:00-00:00
Thursday 08:00-00:00
Friday 08:00-00:00
Saturday 08:00-00:00
Sunday 08:00-00:00

 gallery image

