



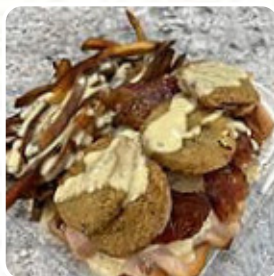
<p><b>Lb Pulled Pork</b>          20.99          1lb 2lb 3lb 4lb 5lb 6lb</p>	<p><b>Lb Pit Turkey</b>          20.99          1lb 2lb 3lb 4lb 5lb 6lb</p>
<p><b>Lb Pulled Chicken</b>          20.99          1lb 2lb 3lb 4lb 5lb 6lb</p>	<p><b>Lb Pit Ham</b>          20.99          1lb 2lb 3lb 4lb 5lb 6lb</p>
<p><b>Lb Pulled Brisket</b>          20.99          1lb 2lb 3lb 4lb 5lb 6lb</p>	

### PLATTERS

All platters come with two sides

# Chesapeake Bbq Company Menu

<https://menulist.menu>  
 21226 Pasadena, United States  
 +14102555804 - <https://www.chesapeakebbqmd.com>



MEATS BY THE POUND	
<p><b>Pork</b>          1lb 20.99 2lb 40.99 3lb 60.99 4lb 80.99 5lb 100.99 6lb 120.99</p>	<p><b>Chicken</b>          1lb 20.99 2lb 40.99 3lb 60.99 4lb 80.99 5lb 100.99 6lb 120.99</p>
<p><b>Brisket</b>          1lb 20.99 2lb 40.99 3lb 60.99 4lb 80.99 5lb 100.99 6lb 120.99</p>	<p><b>Turkey</b>          1lb 20.99 2lb 40.99 3lb 60.99 4lb 80.99 5lb 100.99 6lb 120.99</p>
PLATTERS	
<p><b>Platter 1</b>          1lb 20.99 2lb 40.99 3lb 60.99 4lb 80.99 5lb 100.99 6lb 120.99</p>	<p><b>Platter 2</b>          1lb 20.99 2lb 40.99 3lb 60.99 4lb 80.99 5lb 100.99 6lb 120.99</p>

A complete [menu](#) of Chesapeake Bbq Company from Pasadena covering all 19 meals and drinks can be found here on the food list. For **changing offers**, please get in touch via phone or use the contact details provided on the website.

# *Chesapeake Bbq Company Menu*



## *Starters & Salads*

FRENCH FRIES

## *Chicken*

PINEAPPLE CHICKEN

## *Sauces*

BBQ

## *Beef Dishes*

BRISKET

## *From The Grill*

RIBS

## *Chicken Wings*

WINGS

## *Salads*

COLESLAW

CUCUMBER SALAD

## *Side Dishes*

MACARONI AND CHEESE

BAKED BEANS

## *These Types Of Dishes Are Being Served*

PANINI

ROAST BEEF

SALAD

## *Ingredients Used*

BEEF

CHILI

COLLARD GREENS

CUCUMBER

BEANS

CHEESE

# Chesapeake Bbq Company Menu



## Chesapeake Bbq Company

21226 Pasadena, United States

Opening Hours:

---

 gallery image