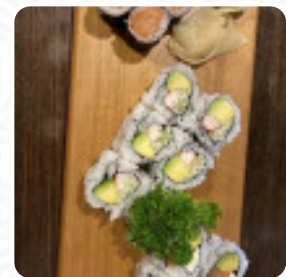




Sushi Village 280 Menu

<https://menulist.menu>

601 Doug Baker Blvd #101, 35242, Birmingham, US, United States
+12059681588 - <http://sushivillage280.com/>



The Card of Sushi Village 280 from Birmingham includes about **23** different dishes and drinks. On average, you pay for a dish / drink about \$16.8.

Sushi Village 280 Menu



Salads

TUNA SALAD

Soups

CLEAR SOUP \$2.2

Sushi Rolls

SUSHI

Sushi

SASHIMI

Drinks

SODAS

Special Rolls

BLACK DRAGON ROLL \$13.1

Popular Items

LION KING ROLL \$15.3

Chef's Special Roll

DOUBLE BEAUTY ROLL \$14.2

Chef Special Roll

UNDER SEA ROLL \$15.3

Chef's Special Maki

TWIN DRAGON \$13.1

Japanese Specialties

MISO SOUP \$2.2

SAKE

Party Tray

PARTY A \$32.7

PARTY B \$43.6

Ingredients Used

TUNA

SHRIMP

AVOCADO

These Types Of Dishes Are Being Served

APPETIZER

SALAD

SPICY TUNA

ICE CREAM

MEAT

SOUP

Sushi Village 280 Menu



Sushi Village 280

601 Doug Baker Blvd #101,
35242, Birmingham, US, United
States

Opening Hours:

Monday 11:00-15:30 17:00-21:30
Tuesday 11:00-15:30 17:00-21:30
Wednesday 11:00-15:30 17:00-
21:30
Thursday 11:00-15:30 17:00-21:30
Friday 11:00-15:30 17:00-22:30
Saturday 12:00-22:30
Sunday 12:00-21:30

Made with menulist.menu

 gallery image