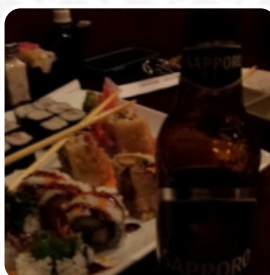




Mt. Fuji Japanese Sushi Steakhouse Menu

<https://menulist.menu>

120 Doug Baker Blvd, 35242, Birmingham, US, United States
+12059950588 - <http://www.mtfujisteakhousehoover.com/>



Here you can find the [menu](#) of Mt. Fuji Japanese Sushi Steakhouse in Birmingham. At the moment, there are **19** dishes and drinks on the food list. You can inquire about **changing offers** via phone.

Mt. Fuji Japanese Sushi Steakhouse Menu



Sandwiches

CALIFORNIA SANDWICH

Sushi

SASHIMI

Noodle

RAMEN

Spezial-Nudeln

UDON

Asian

GYOZA

Sushi Rolls

SUSHI

SPIDER ROLL

Indian

CHICKEN CURRY

CHICKEN CURRY

Japanese Specialties

CHICKEN TERIYAKI

MISO SOUP

Ingredients Used



SOFT SHELL CRAB

TUNA

MISO

These Types Of Dishes Are Being Served

SOUP

CHICKEN

NOODLES

APPETIZER

TUNA STEAK

Mt. Fuji Japanese Sushi Steakhouse Menu



Mt. Fuji Japanese Sushi Steakhouse

120 Doug Baker Blvd, 35242,
Birmingham, US, United States

Opening Hours:

Sunday 11:00-22:00
Monday 11:00-22:00
Tuesday 11:00-22:00
Wednesday 11:00-22:00
Thursday 11:00-22:00
Friday 11:00-22:00
Saturday 11:00-22:00

Made with menulist.menu

 gallery image

