

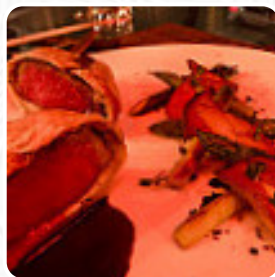


Stage Cafe Menu

<https://menulist.menu>

1250 Kapiolani Blvd, 96814, Honolulu, US, United States

(+1)8082375491,(+1)8082375429 - <http://honoluludesigncenter.com/hdc-dining-and-entertainment/hdc-stage-cafe>



A **comprehensive [menu](#)** of Stage Cafe from Honolulu covering all **19** dishes and drinks can be found here on the food list. For *changing offers*, please get in touch via phone or use the contact details provided on the website.

Stage Cafe Menu

Seafood

CALAMARI

Drinks

DRINKS

Rice

RISOTTO

Dessert

CHEESECAKE

From The Grill

RIBS

Restaurant Category

DESSERT

Ingredients Used

VEGETABLES

ESCARGOT

SHRIMP

SALMON

SCALLOPS

DUCK

These Types Of Dishes Are Being Served



FISH

PASTA

SALAD

LOBSTER

MEATLOAF

LAMB CHOPS

DESSERTS



Stage Cafe Menu



Stage Cafe

1250 Kapiolani Blvd, 96814,
Honolulu, US, United States

Opening Hours:

Tuesday 10:00 -15:00
Wednesday 10:00 -15:00
Thursday 10:00 -15:00
Friday 10:00 -15:00
Saturday 10:00 -15:00

Made with menulist.menu

