



<b>Ad</b> 9.50	<b>Poke Bowl*</b> 12.95
Adjo-lime dressing, tossed with carrots, am-sala. Topped with walnuts. V, GF, DF	Served over freshly steamed.
<b>Sliders</b> 8.95	<b>Shoyu Poke*</b> 14.95
Adjo-lime sandwiched in Hawaiian sweet rolls. Comes with three. GF	Sashimi-grade ahi tuna cubes, sesame. Garnished with sweet a.
<b>Ahi Plate</b> 12.50	<b>Spicy Tuna Poke*</b> 14.95
Ahi poke served with two scoops rice, one scoop ahi-lime kale salad, and fresh corn-salsa. GF	Marinated sashimi-grade ahi tuna cubes, spicy-sauce with masago. Topped with.
<b>hi</b> 3.85	<b>Poke on Kale*</b> 14.95
hi staple. GF, DF	Served over bed of mango-lime marinated kale.
<b>vegs.</b> 4.50	<b>Poke Combo*</b> 14.95
<b>V, GF, DF</b> 5.00	Your choice of poke on half rice, half kale. GF, DF
	<b>Mixed Ahi Tuna Bowl*</b> (limited availability)
	Seasoned with sea salt, soy, sesame & scallions. GF.
	<b>Canned Drinks &amp; Glass Coca Cola</b> 2
	<b>Ramune</b> 3
	<b>Waiakoa Volcanic Alkaline Water</b> 7
	<b>Local Kombucha</b>



\*These items contain raw or undercooked poultry, seafood

# Ohana Island Kitchen Menu

<https://menulist.menu>  
 2563 15th Street, Denver I-80211, United States  
 (+1)3037186580 - <http://ohanadenver.com/>

owner and Lani Colburn. We started Ohana Island Kitchen as a labor of love and passion since the start of 2014. We are a vibrant, casual and family-oriented eatery that serves up delicious and healthy food. Ohana Island Kitchen is a place where you can enjoy a meal with your family and friends. We are proud to be a part of the Ohana family and we hope you will join us soon.



<b>Ad</b> 9.50	<b>Poke Bowl*</b> 12.95
Adjo-lime dressing, tossed with carrots, am-sala. Topped with walnuts. V, GF, DF	Served over freshly steamed rice.
<b>Sliders</b> 8.95	<b>Shoyu Poke*</b> 14.95
Adjo-lime sandwiched in Hawaiian sweet rolls. Comes with three. GF	Sashimi-grade ahi tuna cubes, sesame. Garnished with sweet a.
<b>Ahi Plate</b> 12.50	<b>Spicy Tuna Poke*</b> 14.95
Ahi poke served with two scoops rice, one scoop ahi-lime kale salad, and fresh corn-salsa. GF	Marinated sashimi-grade ahi tuna cubes, spicy-sauce with masago. Topped with.
<b>hi</b> 3.85	<b>Poke on Kale*</b> 14.95
hi staple. GF, DF	Served over bed of mango-lime marinated kale.
<b>vegs.</b> 4.50	<b>Poke Combo*</b> 14.95
<b>V, GF, DF</b> 5.00	Your choice of poke on half rice, half kale. GF, DF
	<b>Mixed Ahi Tuna Bowl*</b> (limited availability)
	Seasoned with sea salt, soy, sesame & scallions. GF.
	<b>Canned Drinks &amp; Glass Coca Cola</b> 2
	<b>Ramune</b> 3
	<b>Waiakoa Volcanic Alkaline Water</b> 7
	<b>Local Kombucha</b>

<b>Ad</b> 9.50	<b>Poke Bowl*</b> 12.95
Adjo-lime dressing, tossed with carrots, am-sala. Topped with walnuts. V, GF, DF	Served over freshly steamed rice.
<b>Sliders</b> 8.95	<b>Shoyu Poke*</b> 14.95
Adjo-lime sandwiched in Hawaiian sweet rolls. Comes with three. GF	Sashimi-grade ahi tuna cubes, sesame. Garnished with sweet a.
<b>Ahi Plate</b> 12.50	<b>Spicy Tuna Poke*</b> 14.95
Ahi poke served with two scoops rice, one scoop ahi-lime kale salad, and fresh corn-salsa. GF	Marinated sashimi-grade ahi tuna cubes, spicy-sauce with masago. Topped with.
<b>hi</b> 3.85	<b>Poke on Kale*</b> 14.95
hi staple. GF, DF	Served over bed of mango-lime marinated kale.
<b>vegs.</b> 4.50	<b>Poke Combo*</b> 14.95
<b>V, GF, DF</b> 5.00	Your choice of poke on half rice, half kale. GF, DF
	<b>Mixed Ahi Tuna Bowl*</b> (limited availability)
	Seasoned with sea salt, soy, sesame & scallions. GF.
	<b>Canned Drinks &amp; Glass Coca Cola</b> 2
	<b>Ramune</b> 3
	<b>Waiakoa Volcanic Alkaline Water</b> 7
	<b>Local Kombucha</b>



A comprehensive [menu](#) of Ohana Island Kitchen from Denver covering all 18 courses and drinks can be found here on the card. For **seasonal** or **weekly deals**, please get in touch via phone or use the contact details provided on the website.

# Ohana Island Kitchen Menu



## Pizza

PIZZA HAWAII

## Drinks

DRINKS

## Sauces

SALSA

## Japanese Specialties

CHICKEN TERIYAKI

## Hot Drinks

COFFEE

## Salads

MACARONI SALAD

KALE SALAD

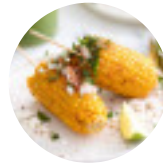
## These Types Of Dishes Are Being Served

FISH

SALAD

SPICY TUNA

## Ingredients Used



CORN

KIMCHI

GINGER

MILK

PORK MEAT

TUNA

KALE

MANGO

# *Ohana Island Kitchen Menu*



## *Ohana Island Kitchen*

2563 15th Street, Denver I-  
80211, United States

### **Opening Hours:**

Monday 11:00 -20:00  
Tuesday 11:00 -20:00  
Wednesday 11:00 -20:00  
Thursday 11:00 -20:00  
Friday 11:00 -20:00  
Saturday 11:00 -20:00

Made with [menulist.menu](https://menulist.menu)

 gallery image

