

STAGECOACH

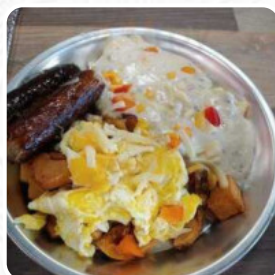
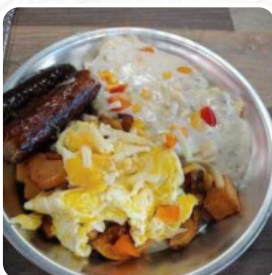
Closed Monday



Stagecoach Menu

<https://menulist.menu>

501 S Douglas Hwy, Gillette I-82716, United States
+13072577700



Here you can find the [menu](#) of Stagecoach in [Gillette](#). At the moment, there are **18** menus and drinks on the card. You can inquire about **changing offers** via phone.

Stagecoach Menu



Pizza

WESTERN PIZZA

Breakfast

SCRAMBLED EGGS

Side Dishes

WAFFLE FRIES

Starters & Salads

FRENCH FRIES

Soft Drinks

JUICE

Dessert

WAFFLE

CREPES

Mexican Dishes

BREAKFAST BURRITO

BURRITO

Ingredients Used

CHILI

BACON

Burger

CHEESEBURGER

BACON CHEESEBURGER

PATTY MELT

These Types Of Dishes Are Being Served

PANINI

BURGER

MEAT

SALAD

Stagecoach Menu



Stagecoach

501 S Douglas Hwy, Gillette I-
82716, United States

Opening Hours:
Wednesday 07:00 -15:00
Thursday 07:00 -15:00
Friday 07:00 -15:00
Saturday 07:00 -15:00
Sunday 08:00 -14:00

Made with menulist.menu

