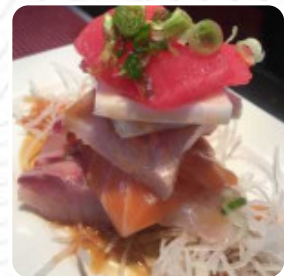
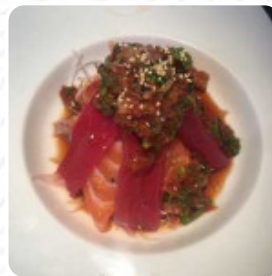




## ***Yuki Hana Menu***

<https://menulist.menu>  
131 Kinderkamack Rd, Park Ridge I-07656-1336, United States  
(+1)2013913230



The restaurant from Park Ridge offers **18 different menus and drinks** on [the menu](#) at an average \$8.9.

# Yuki Hana Menu



## Salads

SEAWEED SALAD

## Seafood

SHRIMP TEMPURA

## Sushi

SASHIMI

## Gyoza

KIMCHI GYOZA \$7.0

## Fish

SALMON ROLL \$5.0

## Cold Appetizer

SUNOMONO \$8.0

## Sushi & Sashimi Dinner

TEKKA DON (TUNA) \$22.0

## Appetizer

BEEF NEGIMAKI \$18.0

TEMPURA

## Ingredients Used

SHRIMP

EDAMAME \$4.0

## These Types Of Dishes Are Being Served

CHICKEN

SOUP

SALAD

## Sushi Rolls

SHRIMP TEMPURA ROLL

SUSHI \$8.0

CUCUMBER ROLL \$4.0

AVOCADO ROLL \$4.0

# ***Yuki Hana Menu***



## ***Yuki Hana***

131 Kinderkamack Rd, Park  
Ridge I-07656-1336, United  
States

**Opening Hours:**  
---

Made with [menulist.menu](https://menulist.menu)

