

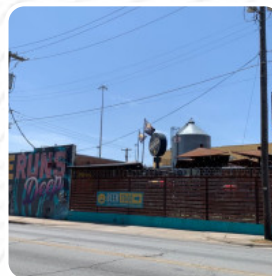
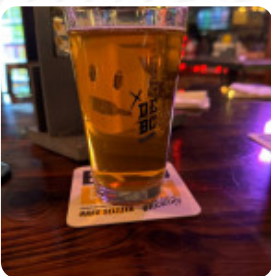


Deep Ellum Brewing Company Taproom Menu

<https://menulist.menu>

2823 Saint Louis St, Dallas, United States

(+1)2148883322 - https://www.deepellumbrewing.com/taprooms/?utm_source=gmb&utm_medium=yext



On this homepage, you can find the **complete [menu](#)** of **Deep Ellum Brewing Company Taproom** from Dallas. Currently, there are *17* meals and drinks up for grabs. For **seasonal or weekly deals**, please contact the owner of the restaurant directly. You can also contact them through their website.

Deep Ellum Brewing Company Taproom Menu



Pizza

PIZZA TEXAS

Main Courses

NACHOS

Dessert

BLUEBERRY PIE

Mexican Dishes

TACO

Mexican

TACOS

Egg Dishes

OMELETTE

Restaurant Category

CUBAN

Ingredients Used

HONEY

Side Dishes

TATER TOTS

TOTS

Drinks

BEER

DRINKS

These Types Of Dishes Are Being Served

PANINI

CHICKEN

Sandwiches



SPICY CHICKEN SANDWICH

CUBAN SANDWICH

CHICKEN SANDWICH

Deep Ellum Brewing Company Taproom Menu



Deep Ellum Brewing Company Taproom

2823 Saint Louis St, Dallas,
United States

Opening Hours:
Wednesday 12:00 -22:00
Thursday 12:00 -22:00
Friday 12:00 -22:00
Saturday 12:00 -22:00
Sunday 12:00 -20:00

 gallery image