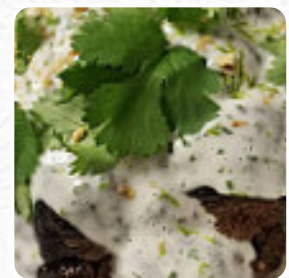




Station Menu

<https://menulist.menu>
120 North Canal Street IL 60661, Chicago, United States
+13129021111 - <https://www.stationchicago.com/>



The restaurant from Chicago offers **149** different dishes and drinks on [the menu](#) at an average \$18.6.

Station Menu



Salads

TUNA SALAD \$16.0

Appetizers

ROASTED BEET SALAD \$14.0

Soups

GAZPACHO \$8.0

Mains

BLACK BASS CRUDO \$12.0

Salad

CAESAR \$13.0

Starters & Salads

FRENCH FRIES

Chicken

FRIED CHICKEN \$16.0

Pesce

DAILY FISH

Starters

AMISH CHICKEN

Soft Drinks

PEPSI

Spirits

PINOT GRIGIO \$10.0

Fresh Juices

ACE \$7.0

Subs

VEGGIE \$15.0

Classics

PALOMA \$11.0

Wine

CHARDONNAY \$11.0

Easy To Drink

PINOT NOIR \$10.0

House Specialties

BREADED CHICKEN CROQUETTES \$10.0

Large Plates

POTATO MUSHROOM AGNOLOTTI \$18.0

Red

CAB BLEND \$11.0

Greens

LOCAL SPRING SALAD \$9.0

Bourbon

TEMPERANCE \$6.0

Bottle

NORTH COAST OLD RASPUTIN \$8.0

Station Menu



Lager

OFF COLOR \$6.0

Domestic And Craft Beers

GREAT LAKES \$7.0

ALKOHOLISCHE GETRÄNKE

ROSÉ \$10.0

Bottled Beer & Cans

LAGUNITAS \$6.0

Local Crafts

FRESH PICK \$10.0

Beers, Ciders & Hard Seltzers

AYINGER \$7.0

Vegetarian: Starter

CORN FRITTERS \$8.0

Shareables | Starters | Small Plates

TARTINE \$11.0

Premium Beer Selections

BALLAST POINT \$7.0

Beers & Draught

DESCHUTES \$7.0

Cmf Featured Pours

RED BLEND \$11.0

Seasonal Testing

BLACK BASS \$24.0

Vinho Da Casa /House Wine (Garaffa)

HOUSE WINE \$7.0

Dinner \$46.99

RIBEYE \$30.0

Pizza Standard - 28Cm

GLADIATOR \$11.0

Burgers

CHEESE BURGER

SKA \$6.0

Dessert

SWEETS SEASONAL TART \$9.0

FROZEN SWEET TRIO \$10.0

Small Plates

CURRYWURST FLATBREAD \$15.0

GREENS GAZPACHO \$8.0

White / Rosé

SAUV BLANC \$10.0

RIESLING J. \$10.0

Station Menu



Ingredients Used

BEEF

CHEESE

Alcoholic Drinks

MALBEC \$9.0

CABERNET \$14.0

PROSECCO \$10.0

Cocktails

FALLEN APPLE \$11.0

THE ROYALE \$13.0

EXCHANGE RATE \$11.0

Happy Hour

DRAFT BEER \$6.0

MODERN SCREWDRIVER \$8.0

RUMPLEMINZE \$5.0

Draft Beers

BELL'S BEST BROWN BROWN ALE, MICHIGAN (5.8% ABV) \$7.0

HALF ACRE PONY PILS GERMAN PILSNER, ILLINOIS (5.5% ABV) \$7.0

SPITEFUL IPA AMERICAN IPA, ILLINOIS (6.2% ABV) \$7.0

ALE

HALF ACRE \$7.0

TWO BROTHERS \$6.0

MOODY TONGUE \$8.0

Sandwiches

SMOKED FISH BURGER \$17.0

BLT

B.L.T.

B.L.T

Beer

SHINER \$6.0

HOEGAARDEN \$6.0

STELLA ARTOIS \$6.0

REVOLUTION \$6.0

Drafts

BELLS BREWERY \$7.0

CIGAR CITY \$7.0

SOLEMN OATH \$7.0

THREE FLOYDS \$7.0

LEFT HAND \$7.0

Three Floyds Rotating

SELECTION INDIANA \$7.0

GREAT LAKES HOLY MOSES WITBIER, OHIO (5.4% ABV) \$7.0

LEFT HAND MILK STOUT, ILLINOIS, (6.0% ABV) \$7.0

MAPLEWOOD CRUSHINATOR AMERICAN PALE ALE, ILLINOIS (4.5% ABV) \$7.0

HALF ACRE DEEP SPACE DOUBLE IPA, ILLINOIS (10.0% ABV) \$8.0

These Types Of Dishes Are Being Served

BURGER \$17.0

Station Menu



PORK CHOP	\$24.0
SALAD	
PANINI	
TOSTADAS	

Bottles / Cans

METROPOLITAN	\$6.0
ANDERSON VALLEY	\$7.0
FOUNDERS	\$6.0
VANDER MILL	\$6.0
3 FLOYDS	\$7.0
BOSTEELS KARMELIET	\$8.0

White Wines

ROSE 2016 CHAPOUTIER BELLARUCHE, FRANCE	\$10.0
PINOT GRIGIO 2016 ELENA WALCH PRENDO, ITALY	\$10.0
SAUVIGNON BLANC 2016 SIMI, SONOMA, CA	\$11.0
RIESLING 2015 J. BAUMER, RHEINGAU, GERMANY	\$10.0
CHARDONNAY 2015, TOM GORE, NAPA, CA	\$11.0
CHARDONNAY 2016 CHALK HILL, SONOMA, CA	\$14.0
PROSECCO LE DOLCE COLLINE, ITALY	\$10.0
SAUVIGNON BLANC 2011 FRANÇOIS CROCHET, SANCERRE, FR	
CHARDONNAY 2010 FAR NIENTE, NAPA, CA	\$83.0
CHARDONNAY 2009 NEWTON UNFILTERED, NAPA, CA	\$144.0
CHARDONNAY 2011 RAMEY, SONOMA, CA	\$59.0
CHARDONNAY 2013 MEIOMI, CA	\$48.0

VIOGNIER 2012 KUNIN PARADISE ROAD, SANTA BARBARA, CA	\$54.0
GRÜNER VELTLINER 2011 STADT KREMS, KREMSTAL, AT	\$45.0
RIESLING 2011 WIEMER DRY, FINGER LAKES, NY	\$45.0
RIESLING 2013 CHATEAU ST. MICHELLE, COLUMBIA VALLEY, CA	\$40.0
MUSCADET 2011 DOMAINE MICHEL BREGEON, LOIRE VALLEY, FR	\$55.0

Craft Selections

BALLAST POINT ALOHA SCULPIN IPA, CALIFORNIA (7.0% ABV)	\$7.0
REVOLUTION ANTI HERO AMERICAN PALE ALE, CHICAGO, IL (5.2% ABV)	\$6.0
REVOLUTION TROPICAL HERO IPA, ILLINOIS (7.0% ABV)	\$6.0
REVOLUTION EUGENE PORTER ROBUST PORTER, CHICAGO (6.8% ABV)	\$6.0
LEXINGTON KENTUCKY BOURBON BARREL ALE ENGLISH STRONG ALE ALE, LEXINGTON, KY (8.19% ABV)	\$8.0
BROOKLYN BREWERY CHOCOLATE STOUT RUSSIAN IMPERIAL STOUT, BROOKLYN, NY, (10% ABV)	\$7.0
CENTRAL WATERS SATIN SOLITUDE AMERICAN DOUBLE/ IMPERIAL STOUT, AMHERST, WI (7.5% ABV)	\$7.0
GREAT LAKES ELIOT NESS VIENNA LAGER, CLEVELAND, OH (6.2% ABV)	\$7.0
LAGUNITAS LITTLE SUMPIN' SUMPIN' AMERICAN PALE WHEAT ALE, PETALUMA, CA (7.5% ABV)	\$6.0
UNCLE JOHN'S SEASONAL CIDER HARD APPLE CIDER, MI (6.5% ABV)	\$7.0

Station Menu



ANGRY ORCHARD HARD CIDER, NY
(6.8% ABV) \$7.0

HOLLAND IMPORT BAVARIA LAGER
PALE LAGER, NETHERLANDS (4.8% ABV) \$5.0

HOEGAARDEN WITBIER, BELGIUM
(4.9% ABV) \$6.0

SIX POINT GLOBAL WARMER RED
ALE, CHICAGO (7.0% ABV) \$7.0

SHINER BOCK BOCK, SHINER, TX
(4.4% ABV) \$6.0

TWO BROTHERS PRAIRIE PATH
GERMAN PILSNER, WARRENVILLE,
IL (5.1% ABV) \$6.0

AYINGER BRAU WEISSE
HEFEWEISEN, GERMANY (5.1%
ABV) \$7.0

TRIPEL KARMELIET TRIPEL,
BELGIUM (8.4% ABV) \$10.0

SAUGUTUCK BLUEBERRY MAPLE
STOUT STOUT, MICHIGAN (5.9%
ABV) \$8.0

21ST AMMENDMENT HELL OR HIGH
WATERMELON FRUIT BEER,
CALOIFORNIA (4.9% ABV) \$6.0

Red Wines

PINOT NOIR 2016, MARK WEST,
CENTRAL COAST, CA \$10.0

PINOT NOIR 2014, MEIOMI,
CENTRAL COAST, CA \$12.0

MALBEC 2015 TRAPICHE
BROQUEL, ARGENTINA \$11.0

RED BLEND 2016 ANGLES
COWBOYS, SONOMA, CA \$11.0

CAB BLEND 2016, BANSHEE
MORDECAI, SONOMA, CA \$11.0

CABERNET SAUVIGNON 2014,
HANNA , ALEXANDER VALLEY \$14.0

PINOT NOIR 2009 SANFORD,
SANTA RITA HILLS, CA \$81.0

PINOT NOIR 2011 GOLDENEYE,
ANDERSON VALLEY, CA \$90.0

NEBBIOLO 2010 GIOVANNI ROSSO
LANGHE, PIEDMONT, IT \$44.0

SANGIOVESE 2008 RUFFINO
RISERVA DUCALE, TUSCANY, IT \$55.0

BARBERA D'ASTI 2011 PRUNOTTO
FIULOT, PIEDMONT, IT \$45.0

CLARET 2011 RAMEY, NAPA, CA \$59.0

CABERNET SAUVIGNON 2012
FROG'S LEAP, NAPA, CA \$102.0

CABERNET SAUVIGNON 2011
FARM COLLECTIVE, NAPA, CA \$75.0

SYRAH 2009 HOGUE GENESIS,
COLUMBIA VALLEY, WA \$35.0

SYRAH 2009 MONTES ALPHA,
COLCHUGUA VALLEY, CH \$45.0

SYRAH 2010 TEXIER BRÉZÈME,
COTES DU RHONE, FR \$49.0

SYRAH 2011 QUPE, CENTRAL
COAST, CA \$38.0

ZINFANDEL 2012 SEGHEISIO,
SONOMA, CA \$45.0

ZINFANDEL 2007 JOSEPH SWAN,
SONOMA, CA \$60.0

ZINFANDEL 2012 SEGHEISIO OLD
VINE, SONOMA, CA \$73.0

Station Menu



Station

120 North Canal Street IL 60661,
Chicago, United States

Opening Hours:

Monday 11:30-17:00 17:00-21:00
Tuesday 11:30-17:00 17:00-21:00
Wednesday 11:30-17:00 17:00-
21:00
Thursday 11:30-17:00 17:00-21:00
Friday 11:30-17:00 17:00-21:00
Saturday 11:30-17:00 17:00-21:00

Made with menulist.menu

