



Shinagawa Menu

<https://menulist.menu>
157 E 33rd St NY 10016, New York, United States
+19172616635 - <http://shinagawanyc.com/>



The *menu of Shinagawa* from New York includes **123** meals. On average, **meals or drinks on [the menu](#)** cost about \$13.7. The categories can be viewed on the menu below.

Shinagawa Menu



Salads

GRILLED CHICKEN SALAD \$10.0

Sashimi

SQUID \$4.0

Maki

CHICKEN TEMPURA \$20.0

Side Dishes

SWEET POTATO STICK \$8.0

Drinks

BEER

Chicken

CHICKEN KATSU \$22.0

Insalate

HOUSE MIX SALAD \$7.0

Rolls

SPICY SALMON ROLL \$8.0

Maki Sushi

SALMON SKIN ROLL \$7.0

Main Course

CEVICHE \$13.0

Homemade Sauces

CHIMICHURRI \$13.0

Fish

SALMON ROLL \$7.0

Signature Rolls

VOLCANO ROLL \$12.0

Special Sushi

VEGETABLE TEMPURA \$18.0

Teriyaki

TOFU TERIYAKI \$15.0

Main Courses - Teriyaki

BEEF TERIYAKI \$25.0

Rice Paper Rolls

2 ROLLS \$11.0

Japanese Salads

PEPPER TUNA SALAD \$13.0

Specialty Rolls

DRAGON ROLL \$15.0

Asian Appetizers

FRIED TOFU SALAD \$8.0

Maki & Temaki

SPICY YELLOWTAIL ROLL \$8.0

Nigiri & Sashimi

FRESH WATER EEL* \$4.0

Shinagawa Menu



Sushi & Sashimi A La Carte

FLUKE \$5.0

Hand Rolls

3 ROLLS \$15.0

Sushi Roll & Hand Roll

KING CRAB RAINBOW ROLL \$20.0

Grill Entrée

JUMBO SHRIMP TEMPURA \$25.0

Sushi/Sashimi Combo

SUSHI SASHIMI DINNER \$50.0

Kitchen Lunch

SHRIMP VEGETABLE TEMPURA DON \$14.0

Appetizers, Salads And Fried Rice

SPICY TUNA RICE CRISPY \$11.0

Specialty Tempura

KAKI AGE \$12.0

Sushi Roll Or Hand Roll

EEL AVOCADO ROLL \$8.0

Teriyaki Dinners

SEAFOOD TERIYAKI \$28.0

Homemade Dim Sum

SHU MAI

Donburi (Rice Bowls) - Available Until 3:00 Pm

TOFU TEMPURA \$15.0

Complement Your Steak

KING CRAB* \$13.0

Step One

SHRIMP* \$4.0

Don (Rice Bowl)

EEL DON \$15.0

Maki Vegetarian

KAMPYO ROLL* \$5.0

Inside Out Rolls - Sushi

TUNA ROLL \$7.0

Stokers Signature Pancakes

BANANA FLAMBÉ \$10.0

Chef&Apos;s Special Rolls

SNOW ROLL \$15.0

Fish &Amp; Seafood

MISO SALMON \$12.0

Shinagawa Menu



Maki & Hand Rolls

TORO SCALLION ROLL \$15.0

Thin Roll

SALMON AVOCADO ROLL \$7.0

Katsu & Curry

TON KATSU \$22.0

Grilled & Pan Fried Fish

MISO BLACK COD \$15.0

Restaurant Category

DESSERT

Warm Appetizers (Thai)

SEAFOOD TEMPURA \$28.0

Nigiri

SPOT PRAWN \$7.0

BIG EYE TUNA \$5.0

Donburi

TUNA DON \$15.0

SALMON DON \$15.0

Seafood

EBI SHINJO \$14.0

SEA BREAM \$7.0

Dessert

GREEN TEA CHEESE CAKE \$12.0

TIRAMISU \$13.0

Japanese Specialties

MISO SOUP

SAKE

Sushi And Sashimi

SALMON CAVIAR \$5.0

FLYING FISH CAVIAR \$4.0

Appetizers From The Sushi Bar

ABURI O-TORO \$25.0

O-TORO TARTARE \$25.0

Vegetarian Sushi Rolls

OSHINKO ROLL* \$5.0

SWEET POTATO ROLL* \$5.0

Roll And Hand Roll

EEL CUCUMBER ROLL \$8.0

YELLOWTAIL SCALLION ROLL \$7.0

Soups / Salad

TOKYO STYLE MISO SOUP \$4.0

KYOTO STYLE RED MISO SOUP \$5.0

Sushi And Sashimi A La Carte

SPANISH MACKEREL \$4.0

Shinagawa Menu



STRIPED BASS \$5.0

All Sushi

SHRIMP TEMPURA ROLL* \$8.0

CALIFORNIA ROLL* \$7.0

Sushi



SPICY TUNA ROLL \$8.0

SASHIMI \$18.0

SURF CLAM* \$4.0

Chef Specials

SHINAGAWA FUSION RICE BALL (FOR 2) \$68.0

CHEF SPECIALS LOBSTER \$35.0

CHEF SPECIALS KING CRAB \$45.0

Sushi Bar Entrees

SUSHI SHINAGAWA \$35.0

SASHIMI SHINAGAWA \$45.0

CHIRASHI \$30.0

These Types Of Dishes Are Being Served

SALMON TERIYAKI \$25.0

SOUP

FISH

Sushi / Sashimi

BLUE FIN O-TORO (JAPAN) \$13.0

BLUE FIN LEAN TUNA (JAPAN) \$7.0

SEA EEL (JAPAN) \$8.0

EGG CUSTARD* \$4.0

Appetizers



LOBSTER SOUP DUMPLING

SHRIMP DUMPLING

GARLIC EDAMAME \$7.0

EEL SOBA TEMPURA \$9.0

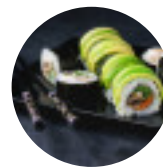
HAMACHI YUZU \$13.0

TIRADITO \$13.0

OCTOPUS* \$5.0

FRIED SHRIMP \$14.0

Sushi Rolls



LOBSTER TEMPURA ROLL* \$17.0

KING CRAB AVOCADO ROLL* \$16.0

SPYDER ROLL* \$12.0

CUCUMBER ROLL* \$5.0

AVOCADO ROLL* \$5.0

UMESHISO ROLL* \$5.0

CHEF ROLL \$15.0

SUSHI \$17.0

Ingredients Used



EDAMAME \$6.0

YELLOWTAIL \$5.0

SALMON \$4.0

SCALLOP \$5.0

MACKEREL \$4.0

CHICKEN TERIYAKI \$22.0

GINGER

MISO

SHRIMP

Shinagawa Menu



Special Rolls

SUSHI PIZZA	\$17.0
SHINAGAWA ROLL	\$15.0
MANGO SHRIMP ROLL*	\$15.0
HAMACHI YUZU ROLL	\$16.0
MURRAY HILL ROLL*	\$20.0

DEEP SALMON ROLL*	\$15.0
EEL DRAGON ROLL*	\$15.0
PINK LOBSTER (SOY PAPER) ROLL*	\$15.0
3RD AVE ROLL*	\$15.0
SUSHI SANDWICH (SOY PAPER) ROLL	\$12.0

Shinagawa Menu



Shinagawa

157 E 33rd St NY 10016, New York, United States

Opening Hours:

Monday 11:30-22:30
Tuesday 11:30-22:30
Wednesday 11:30-22:30
Thursday 11:30-22:30
Friday 11:30-22:30
Saturday 11:30-22:30

Made with menulist.menu

 gallery image

