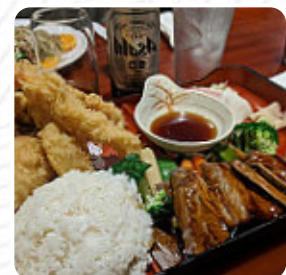
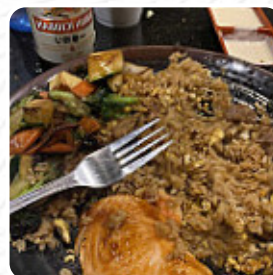
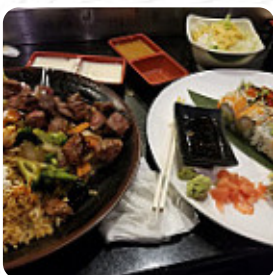




## ***Kumo Hibachi Sushi Menu***

<https://menulist.menu>

6396 S Westnedge Ave MI 490023572, Portage, United States  
**+12693218870 - <http://www.kumokzoo.com/>**



The restaurant from Portage offers **156 different dishes and drinks** on [the menu](#) at an average \$9.2.

# *Kumo Hibachi Sushi Menu*



## *Nigiri*

EBI \$2.0

## *10 Most Popular*

HARUMAKI \$5.0

## *Soups*

SEAFOOD SOUP \$7.0

## *Chinese*

GYOZA \$5.0

## *Antipasti*

GRILLED SQUID \$8.0

## *Salad*

KANI SALAD \$7.0

## *Maki*

CHICKEN TEMPURA \$13.0

## *Donburi*

UNAGI DON (EEL) \$17.0

## *Extras*

MIRIN

## *Seafood*

SHRIMP TEMPURA \$7.0

## *Specialties*

KING CRAB

## *Nigiri Sushi*

AMAEBI \$3.5

## *Maki Sushi*

SALMON SKIN ROLL \$4.5

## *Soup*

CLEAR SOUP \$2.0

## *Sushi Platten*

SUSHI FOR TWO \$41.0

## *Omelette*

TAMAGO \$1.5

## *California Maki*

SPICY TEMPURA MAKI \$8.0

## *Special Roll*

LOBSTER TAIL ROLL \$13.0

## *Sushi Catering*

MIRUGAI

## *Inside-Out-Maki*

BOSTON ROLL \$7.0

## *Special Sushi*

VEGETABLE TEMPURA \$5.3

## *Teriyaki*

TOFU TERIYAKI \$12.0

# *Kumo Hibachi Sushi Menu*



## *Special Sushi Rolls*

SMOKED SALMON ROLL \$4.5

## *Suppe & Vorspeisen*

HIJIKI \$5.0

## *Seafood Dishes*

FRIED CALAMARI \$7.0

## *Entree*

CHICKEN KATSU OR TONKATSU \$14.0

## *Soup & Salad*

KUMO SEAFOOD SALAD \$9.0

## *Beef Dishes With Rice*

SUKIYAKI \$15.0

## *Dinners*

LOBSTER TERIYAKI \$21.0

## *Sushi Entree*

TRI COLOR SASHIMI \$22.0

## *Maki & Temaki*

FUTO MAKI \$5.3

## *From The Sushi Bar*

TRI COLOR SUSHI \$18.0

## *Nigiri & Sashimi*

KATSUO \$2.3

## *Sushi Or Sashimi A La Carte*

ANGAO \$2.8

## *Sushi Bar Special Entree*

SPICY MAKI COMBO \$15.0

## *Sushi Or Sashimi*

WHITE TUNA \$2.0

## *Appetizer From Sushi Bar*

USUZUKURI \$8.0

## *Roll And Hand Roll*

SCALLOP ROLL \$5.3

## *Vegetable Rolls*

VEGETABLE TEMPURA ROLL \$4.5

## *Sashimi Don*

HAMACHI DON (YELLOWTAIL) \$17.0

## *Dinner Soups*

SEAFOOD UDON \$14.0

## *Sushi And Sashimi A La Carte*

STRIPED BASS \$2.0

## *Sushi And Sashimi Entree*

SUSHI AND SASHIMI COMBINATION \$24.0

# ***Kumo Hibachi Sushi Menu***



## ***Rolls And Hand Rolls***

SHRIMP ASPARAGUS ROLL \$5.3

## ***Thai Style Salads***

SQUID SALAD \$8.0

## ***Inside Out Rolls - Sushi***

TUNA ROLL \$4.5

## ***Kitchen Entree Teriyaki***

SCALLOP TERIYAKI \$18.0

## ***Maki Roll - Chef Special Roll***

NARUTO \$9.0

## ***Japanese Hibachi Meal***

HIBACHI FRIED RICE \$3.0

## ***Sushi, Sashimi And Tempura Combinations***

MAKI COMBO \$14.0

## ***Authentic Japanese***

NEGI HAMACHI MAKI \$5.3

## ***Different Dishes - From 6:00 PM***

HIRAME \$2.0

## ***Rice Table***

LOVE BOAT \$60.0

## ***Salads***

HOUSE SALAD \$4.0

CHUKA SALAD \$6.0

## ***Sushi Rolls***

RAINBOW ROLL \$11.0

PHILADELPHIA ROLL \$7.0

## ***Sushi***

CALIFORNIA ROLL \$4.5

ENGAWA \$2.5

## ***Fish***

SMOKED SALMON \$2.5

SALMON ROLL \$4.5

## ***Starters***

EDA MAME \$4.3

VEGETABLE DELUXE \$15.0

## ***Sushi - Nigiri***

HAMACHI \$2.3

MASAGO \$2.0

## ***Signature Rolls***

ROCK N ROLL \$8.0

VOLCANO ROLL \$11.0

## ***Side Order***

HIBACHI SHRIMP OR SCALLOP \$6.0

HIBACHI STEAK OR CHICKEN \$6.0

# Kumo Hibachi Sushi Menu



## Japanese Starters

SEAFOOD SUNOMONO	\$8.0
TAKO SUNOMONO	\$8.0

## Specialty Rolls

DRAGON ROLL	\$11.0
KING CRAB ROLL	\$11.0

## Bento Special

CHOOSE ONE ITEM:  
CHOOSE ONE ITEM

## Nigiri Or Sashimi

UNI	\$4.0
TORO	

## Classic Entree

VEGETABLE TERIYAKI	\$12.0
FILET MIGNON TERIYAKI	\$19.0

## Rice Bowl with Toppings

TEKKA DON	\$17.0
SAKE DON	\$16.0

## Uncategorized

COMBINATION BOXES	\$18.0
TERIYAKI DUO	\$19.0

## Japanese Specialties

YAKITORI	\$5.0
MISO SOUP	\$2.0
SAKE	\$2.3

## Appetizer From Kitchen

WASABI SHUMAI	\$5.0
OSHITASHI	\$4.3
BABY TAKO	\$7.0

## Sushi Bar Entrees

SUSHI REGULAR	\$15.0
SUSHI DELUXE	\$19.0
CHIRASHI	\$17.0

## Ingredients Used

CHICKEN TERIYAKI	\$13.0
UNAGI	\$2.5
RED SNAPPER	\$2.0

## Sushi Entrées

KUMO SUSHI	\$17.0
SASHIMI PLATTER 15 PCS	\$21.0
SUSHI AND SASHIMI COMBINATION (FOR 2)	\$49.0
UKURA DON (SALMON ROE)	\$17.0

## Kitchen Entrees

BEEF, SHRIMP, SALMON OR TUNA TERIYAKI	\$16.0
KUMO TEMPURA	\$17.0
YASAI TAME	\$11.0
IKA (SQUID) TEMPURA	\$14.0

## Udon Or Soba

SHRIMP TEMPURA UDON OR SOBA	\$13.0
YAKI UDON OR SOBA	\$11.0

# Kumo Hibachi Sushi Menu



NABE UDON	\$13.0
YOSHI NABE	\$14.0

## Dessert

MOCHI ICE CREAM	\$4.0
FRIED GREEN TEA ICE CREAM	\$5.0
FRIED VANILLA ICE CREAM	\$5.0
FRIED BANANA	\$4.0
FRIED CHEESE CAKE	\$5.0

## Appetizers

SHUMAI	\$5.0
AGE TOFU	\$5.0
KUSHIYAKI	\$6.0
SUSHI APPETIZERS	\$6.0
SASHIMI APPETIZERS	\$9.0
TUNA OR SALMON TARTAR	\$8.0
FASHION MAKI	\$9.0

## Appetizer

TATSUTA AGE	\$5.0
BEEF NEGIMAKI	\$7.0
KONOGE	\$4.3
TUNA TATAKI OR BEEF TATAKI	\$10.0
HAMACHI KAMA OR SAKE KAMA	\$10.0
FRIED SPIDER	\$8.0
MIXED OSHINKO	\$5.3

## Maki Or Temaki

SALMON WITH AVOCADO OR CUCUMBER	\$5.3
TUNA WITH AVOCADO OR CUCUMBER	\$5.3

TUNA AND YELLOWTAIL WITH TOBIKO	\$6.0
TORO NEGI TUNA BELLY WITH SCALLION	\$9.0
EEL WITH AVOCADO OR CUCUMBER ROLL	\$5.3
SPICY TUNA, SALMON, CALIFORNIA OR SCALLOP ROLL	\$5.3
NATO ROLL, KAMPYO NAKI, OR OSHINKO ROLL	\$3.0
AVOCADO ROLL OR CUCUMBER ROLL	\$3.0
ASPARAGUS OR SPINACH ROLL	\$3.0

## Chef's Special Rolls

FANCY SALMON ROLL	\$13.0
SHOGUN MAKI	\$9.0
SPICY SPIDER MAKI	\$12.0
KING EEL ROLL	\$9.0
WESTERN ROLL	\$8.0
ISO FANTASTIC	\$13.0
K-ZOO ROLL	\$16.0
PORTAGE ROLL	\$17.0
KUMO SPECIAL ROLL	\$14.0
SPICY 2 IN 1 ROLL	\$12.0

## Sushi Nigiri



INARI	\$1.5
SABA	\$1.5
TAKO	\$2.3
HOKKIGAI	\$2.0
IKA	\$2.0
MAGURO	\$2.3
TOBIKO	\$2.5
HOTATEGAI	\$2.5

# ***Kumo Hibachi Sushi Menu***



**IKURA**

**\$3.3**

**KANI**

**\$1.5**

**CONCH**

# ***Kumo Hibachi Sushi Menu***



## ***Kumo Hibachi Sushi***

6396 S Westnedge AveMI  
490023572, Portage, United  
States

### **Opening Hours:**

Monday 11:00-14:00 16:00-21:00  
Tuesday 11:00-14:00 16:00-21:00  
Wednesday 11:00-14:00 16:00-  
21:00  
Thursday 11:00-14:00 16:00-21:00  
Friday 11:00-14:00 16:00-21:45  
Saturday 12:00-21:45  
Sunday 12:15-20:30

Made with [menulist.menu](https://menulist.menu)

