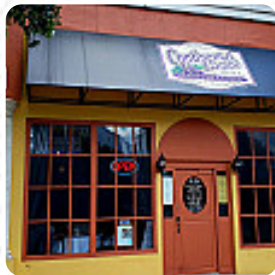




Continental Flambe Menu

<https://menulist.menu>

936 E New Haven Ave FL 32901, Melbourne, United States
+13213726002 - <http://www.continentalflambe.com/>



The Card of Continental Flambe from Melbourne contains about **39** different meals and drinks. On average, you pay for a dish / drink about \$12.7.

Continental Flambe Menu



Salads

WARM GOAT CHEESE \$9.0

Soups

LOBSTER BISQUE \$7.0

Drinks

DRINKS

Tacos

GARLIC ROASTED POTATOES \$3.0

Main

GRILLED SWORDFISH FILET \$24.0

Chicken Specialties

MANGO CHICKEN \$20.0

Entrée Selections

ANGEL HAIR POMODORO \$16.0

Seafood Entree's

CHAMPAGNE SHRIMP \$9.0

Cheese And Charcuterie

BRIE SPRING ROLL \$7.0

Seafood And Steaks

GRILLED FILET MIGNON (10 OZ) \$35.0

Signature Meats

BANANAS FOSTER \$6.0

Auxiliaries

PORTOBELLO ROASTED ONIONS \$4.0

Restaurant Category

DESSERT

Starters

AHI TUNA FLATBREAD \$9.0

SHRIMP CHICKEN CURRY \$21.0

Ingredients Used

ESCARGOT \$7.0

BEEF

Appetizers

SOUP DU JOUR \$5.0

GRILLED PORTOBELLO CAPRESE \$9.0

PLANTAIN CAKES \$9.0

Side Dishes

BRUSSELS SPROUTS WITH BACON \$3.5

ROASTED ASPARAGUS \$4.0

HAND CUT FRIES \$3.0

These Types Of Dishes Are Being Served

PASTA

MUSSELS \$10.0

TUNA STEAK

APPETIZER

Continental Flambe Menu



Dessert

BANANAS FASTER

APPLE CARDINALE \$6.0

STRAWBERRY CRÊPES VANILLA
JOE CREAM \$7.0

CHOCOLATE FONDUE (2 OR MORE)

CREME BRULEE \$5.0

Entree

MONTE CRIST

NY STRIP AU POIVRE (14 OZ) \$29.0

CALVADOS PORK CHOP \$21.0

GRILLED SLICED BEEF
TENDERLOIN \$26.0

SCOTTY \$22.0

MUSTARD MAPLE SALMON \$21.0

PEANUT CRUSTED AHI TUNA

\$24.0

Continental Flambe Menu



Continental Flambe

936 E New Haven Ave FL 32901,
Melbourne, United States

Opening Hours:

Monday 11:00-14:30

Tuesday 11:00-14:30 05:00-21:30

Wednesday 11:00-14:30 05:00-
21:30

Thursday 11:00-14:30 05:00-21:30

Friday 11:00-14:30 05:00-21:30

Saturday 05:00-21:30

Sunday 05:00-20:00

Made with menulist.menu

 gallery image