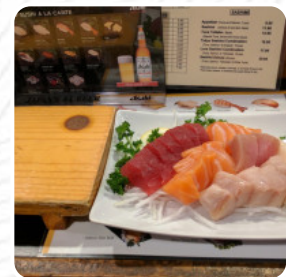




## Tokyo Love Menu

<https://menulist.menu>

12565 Harbor Blvd Garden Grove, CA 92840-5802, United States  
+17145344751 - <https://tokyolovesushi.com>



The menu of Tokyo Love from Garden Grove includes 145 dishes. On average, dishes or drinks on [the menu](#) cost about \$11.8. The categories can be viewed on the menu below.

# Tokyo Love Menu



## Main Courses

RIBS

## Chinese

GYOZA

## Extras

SPICY MAYO \$2.0

## Seafood

SHRIMP TEMPURA

## Sushi Nigiri

SALMON EGG (IKURA) SUSHI \$7.0

## Starters & Salads

FRENCH FRIES

## Side Orders

SHRIMP TEMPURA (1 PIECE) \$2.5

## Fingerfood

CALAMARI RINGS \$12.0

## Starters

SESAME CHICKEN \$11.0

## Maki Sushi

SALMON SKIN ROLL \$9.0

## Bowls

CHICKEN BOWL \$15.0

## Inside Out

CRUNCH ROLL \$13.0

## Sushi Specials

PHILADELPHIA ROLL \$10.0

## Tempura Rolls

MIXED TEMPURA \$11.0

## Fish

SALMON ROLL \$9.0

## Fusion Rolls

KYOTO ROLL \$14.0

## Spezial-Nudeln

UDON \$16.0

## House Rolls

TEMPURA CALIFORNIA ROLL \$13.0

## Main Courses - Teriyaki

BEEF TERIYAKI \$17.0

## Japanese Starters

SASHIMI APPETIZER \$13.0

## Small Plates

SHRIMP AND VEGETABLE TEMPURA \$18.0

## Soup And Salad

SALMON SKIN SALAD \$13.0

# Tokyo Love Menu



## Sides And Extras

VEGETABLE ROLL \$9.0

## Vegetarian Sushi Rolls

AVOCADO ROLL \$8.0

## Specialty Rolls

DRAGON ROLL \$15.0

## Dinner Entrées

DONKSTSU \$18.0

## Hand Rolls

LOBSTER HAND ROLL \$13.0

## Nigiri/ Sashimi

ALBACORE SUSHI \$5.8

## Alcohol

HAKUTSURU DRAFT SAKE \$12.0

## Raw Sushi

JAPANESE SNAPPER SUSHI \$5.8

## Basic Rolls (Sushi)

SPICY ALBACORE ROLL \$9.0

## Specialty Roll

BURRITO ROLL \$12.0

## Appetizer From Sushi Bar

7 PIECE SASHIMI APPETIZER \$12.0

## Cold Plates

CRAB SALAD \$13.0

## Fresh Roll

JUMBO VOLCANO \$14.0

## Sushi Roll Or Hand Roll

SHRIMP TEMPURA ROLL \$11.0

## From The Raw Bar

OYSTER SHOOTER \$7.0

## Jalapenos Sake

OZEKI SAKE DRY \$9.0

## Small Plates | Meat

BBQ BEEF RIBS \$15.0

## Rockin' Sushi

UNAGI CRUNCH ROLL \$13.0

## Koi Signature Rolls

BAKED LOBSTER ROLL \$15.0

## Daily Favorites

BEEF TERIYAKI BOWL \$15.0

## A La Cart Sushi

CRAB SUSHI \$5.8

## Sushi Bar - Nigiri Sushi

OYSTER SUSHI \$8.0

# Tokyo Love Menu



## Restaurant Category

VEGETARIAN

## Different Dishes - From 6:00 PM

SASHIMI SALAD \$16.0

## Special Fuji Yama Dishes

CATERPILLAR ROLL \$13.0

## Rice Bowl with Toppings

CHIRASHI SUSHI \$25.0

## Appetizer

GYOZA DUMPLING \$11.0

TEMPURA

## Dessert

TEMPURA ICE CREAM \$5.0

MOCHI ICE CREAM \$5.0

## Rolls

SPICY TUNA CRUNCH ROLL \$13.0

MOUNTAIN ROLL \$12.0

## Special Rolls

YELLOW TAIL ROLL \$9.0

TEMPURA PHILADELPHIA ROLL \$14.0

## Japanese Specialties

YAKITORI \$13.0

MISO SOUP \$2.5

## Special Baked Rolls

AMERICAN ROLL \$14.0

BAKED SALMON ROLL \$13.0

## Uncategorized

SPECIAL SHRIMP ROLL \$13.0

QUAIL EGG SHOOTER \$4.0

## Beer

JAPANESE BEERS

BUD LIGHT \$3.5

BUDWEISER \$3.5

## Special Roll

SPECIAL TUNA ROLL \$13.0

SPECIAL SALMON ROLL \$13.0

BAKED SCALLOP ROLL \$14.0

## Entree

SALMON SHIYOYAKI \$18.0

UNA-JU \$25.0

CHICKENKATSU \$18.0

## Salads

HOUSE SALAD \$3.0

SPICY TUNA SALAD \$15.0

TOFU SALAD \$13.0

SEAWEED SALAD \$10.0

## Appetizers

SHRIMP ROLL \$7.0

DYNAMITE \$8.0

# Tokyo Love Menu

BAKED MUSSELS ON THE 1/2 SHELL \$12.0

DEEP FRIED TOFU \$11.0

## Sushi Rolls

CUCUMBER ROLL \$7.0

SPIDER ROLL \$14.0

RAINBOW ROLL \$14.0

SUSHI

## Side Dishes

STEAMED RICE \$2.5

CUCUMBER SALAD \$3.0

EEL SAUCE \$2.0

PONZE SAUCE \$2.0

## Sake & Beers (Must Be 21 To Purchase)

HAKUTSURU BLUE COLD SAKE \$18.0

KARATABBA PREMIUM COLD SAKE \$17.0

SAYURI UNFILTERED COLD SAKE \$18.0

KIZAKURA COLD SAKE \$30.0

## Sashimi

SASHIMI (ONE ITEM) \$15.0

TUNA TATTAKE \$16.0

TOKYO SASHIMI COMBINATION \$22.0

LOVE SASHIMI COMBINATION \$25.0

SASHIMI DELUXE \$43.0

## These Types Of Dishes Are Being Served

ICE CREAM \$4.0

SALMON TERIYAKI \$18.0

SOUP

CHICKEN

SPICY TUNA

## Premium Rolls

BBQ SNAPPER ROLL \$14.0

TOKYO LOVE ROLL \$14.0

SPECIAL LOVE ROLL \$14.0

GARDEN GROVE ROLL \$14.0

BAKED YELLOWTAIL COLLAR ROLL \$13.0

BAKED SALMON COLLAR ROLL \$9.0

## Ingredients Used

SOFT SHELL CRAB \$13.0

EDAMAME \$4.5

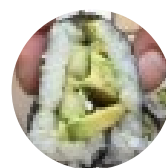
CHICKEN TERIYAKI \$16.0

SHRIMP

MISO

TUNA

## Sushi



CALIFORNIA ROLL \$8.0

SPICY TUNA ROLL \$9.0

SMELT EGG SUSHI \$6.0

BEAN CURD SUSHI \$6.0

SALMON EGG SUSHI \$8.0

SEA EEL SUSHI \$6.0



# Tokyo Love Menu



EGG SUSHI	\$5.8	OCTOPUS SUSHI	\$5.8
HERRING EGG SUSHI	\$6.0	SEA URCHIN SUSHI	\$9.0
FRESH WATER EAL SUSHI	\$6.0	SURF CLAM SUSHI	\$5.8
SWEET SHRIMP SUSHI, HEAD DEEP-FRIED	\$12.0	SPICY TUNA VOLCANO SUSHI	\$7.0

## Dinner Combination

1. CHICKEN TERIYAKI AND CA ROLL	\$19.0
2. CHICKEN TERIYAKI WITH SHRIMP AND VEGETABLE TEMPURA	\$19.0
3. BEEF TERIYAKI AND CA ROLL	\$20.0
4. BEEF TERIYAKI WITH SHRIMP AND VEGETABLE TEMPURA	\$20.0
5. SHRIMP AND VEGETABLE TEMPURA AND CA ROLL	\$19.0
6. SESAME CHICKEN AND CA ROLL	\$20.0
7. SESAME CHICKEN WITH SHRIMP AND VEGETABLE TEMPURA	\$20.0
8. SALMON TERIYAKI AND CA ROLL	\$22.0
9. SALMON TERIYAKI WITH SHRIMP AND VEGETABLE TEMPURA	\$22.0
10. TOKYO SEAFOOD COMBINATION	\$25.0

## Nigiri Sushi



TUNA SUSHI	\$5.6
SALMON SUSHI	\$6.0
YELLOWTAIL SUSHI	\$6.0
SHRIMP SUSHI	\$5.8
MACKEREL SUSHI	\$5.8
SQUID SUSHI	\$5.8
SCALLOP SUSHI	\$6.0

# Tokyo Love Menu



**SPICY SCALLOP VOLCANO SUSHI \$7.0**

# Tokyo Love Menu



## Tokyo Love

12565 Harbor Blvd Garden  
Grove, CA 92840-5802, United  
States

### Opening Hours:

Monday 05:00 -22:00  
Tuesday 05:00 -22:00  
Wednesday 05:00 -22:00  
Thursday 05:00 -22:00  
Friday 05:00 -22:00  
Saturday 05:00 -22:00  
Sunday 05:00 -22:00

Made with [menulist.menu](https://menulist.menu)

 gallery image

