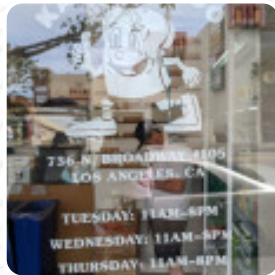
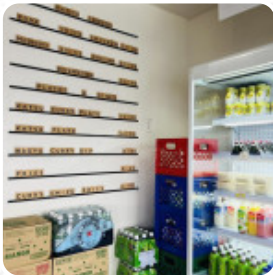




## ***Katsu Sando Los Angeles (chinatown) Menu***

<https://menulist.menu>

736 N Broadway #105, 90012, Los Angeles, US, Kalkbaai iNingizimu Afrika, United States  
**+12133950710 - <http://www.eatkatsusando.com/>**



Here you can find the [menu](#) of *Katsu Sando Los Angeles (chinatown)* in Kalkbaai iNingizimu Afrika. At the moment, there are 18 menus and drinks on the menu. You can inquire about **seasonal or weekly deals** via phone. What [Alex DeMartino](#) likes about Katsu Sando Los Angeles (chinatown):

We got the wagyu beef sandwich and the chicken sandwich. The beef was better as it was not as dry as the chicken. The sauce has a good kick to it when it's by itself but on the sandwiches it just adds a nice flavor. This place is definitely on the expensive side for a sandwich. [read more](#). You can use the WiFi of the place at no extra cost. What [User](#) doesn't like about Katsu Sando Los Angeles (chinatown):

Went yesterday and they were pretty busy so the wait time was maybe like 10 mins not too bad at all! The aesthetic of the place marketing is really cute that's why it caught my eye. I'm a vegetarian so I got the mushroom Sando overall it was good! I'm surprised they used portabello mushroom instead of oyster, it was still good not soggy. I do think the sandwiches could use a little more sauce, I think I just had ketc... [read more](#). The catering service is also provided by the establishment for its customers, For a snack, you can also have the tasty **sandwiches**, small salads and other snacks. fresh vegetables, fish and meat are the main ingredients in the [healthy Japanese cuisine](#) of Katsu Sando Los Angeles (chinatown).

# *Katsu Sando Los Angeles (chinatown) Menu*



## *Sandwiches*

CHICKEN SANDWICH

## *Starters & Salads*

FRENCH FRIES

## *Chicken*

CHICKEN KATSU

## *Sauces*

MAYO

## *Dessert*

COOKIES

## *Indian*

CHICKEN CURRY

## *Pizza*

FUSION PIZZA

WESTERN PIZZA

*These types of dishes are  
being served*

BREAD

PANINI

## *Ingredients Used*

MEAT

CHICKEN

TUNA

SHRIMP

HONEY

PORK MEAT

BEEF

# ***Katsu Sando Los Angeles (chinatown) Menu***



## ***Katsu Sando Los Angeles (chinatown)***

736 N Broadway #105, 90012,  
Los Angeles, US, Kalkbaai  
iNingizimu Afrika, United States

**Opening Hours:**  
Tuesday 11:00 -20:00  
Wednesday 11:00 -20:00  
Thursday 11:00 -20:00  
Friday 11:00 -20:00  
Saturday 11:00 -20:00  
Sunday 11:00 -20:00

 gallery image