

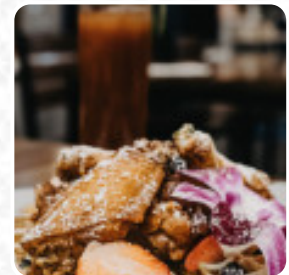
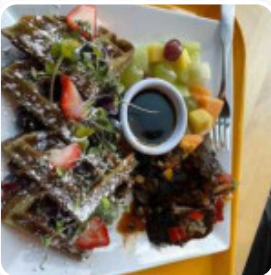


Erma's Island Menu

<https://menulist.menu>

484 S Salina St, Syracuse I-13202-2416, United States

+13158578125,+13152171989 - <https://www.ermasislandsyr.com/>



Here you can find the [menu of Erma's Island](#) in Syracuse. At the moment, there are 18 courses and drinks on the menu. You can inquire about **changing offers** via phone. What [StrausMouse42](#) likes about Erma's Island: Warm and friendly staff with authentic Jamaican food! I had the shrimp and grits, and overall it was terrific. The shrimp were juicy and tender, and the sauce with chopped veggies was full of flavor. The grits were ok very dense, almost like polenta, and far too large a portion of them, but they soaked up the sauce well. Will definitely come back to try the other great looking dishes. [read more](#). What [Randy Wilson](#) doesn't like about Erma's Island: Worst Jamaican spot in Syracuse. Curry was garbage. Jerk crazy dry. Beef patties tasted like they belong at a corner store. If you want good Jamaican Mr Biggs just not at the end of day is best on town. Jerk hut still good. Finga licking still good. This ish is garbage they must be selling to others that never had flavored food in they life. Don't go this is straight garbage. And the owner don't respond to nada with... [read more](#). At Erma's Island in Syracuse, juicy meat is freshly prepared on an open flame and garnished with flavorful sides.

Erma's Island Menu



Salads

COLESLAW

Indian

CHICKEN CURRY

Mexican dishes

BURRITO

Chicken Wings

WINGS

Mexican Burritos

CHICKEN BURRITO

Beverages

JUICES

Breakfast Side Orders

GRITS

Chicken

JERK CHICKEN

CURRY CHICKEN

Sauces

SALSA SAUCE

BBQ SAUCE

Ingredients Used

CHICKEN

SHRIMP

PEAS

MANGO

VEGETABLES

COCONUT

Erma's Island Menu



Erma's Island

484 S Salina St, Syracuse I-
13202-2416, United States

Opening Hours:

Monday 11:00 -21:00
Wednesday 11:00 -21:00
Thursday 11:00 -21:00
Friday 11:00 -21:00
Saturday 11:00 -21:00
Sunday 11:00 -17:00

Made with menulist.menu

 gallery image

