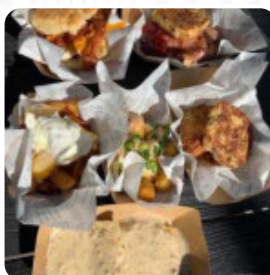




The Biscuit Menu

<https://menuweb.menu>

2550 Pacific Ave, Dallas TX 75226-1493, United States
(+1)4696389390 - <https://thebiscuit.bar/>



The menu of The Biscuit from Dallas includes 17 menus. On average, menus or drinks on [the menu](#) cost about \$5.0. The categories can be viewed on the menu below.

The Biscuit Menu



Side Dishes

TOTS

Sandwiches

SAUSAGE BISCUIT \$4.2

Breakfast

BACON EGG CHEESE BISCUIT \$5.2

Chicken

CHICKEN NUGGETS \$4.5

Potatoes

HASH BROWNS

Kid's Menu

PEANUT BUTTER JELLY \$4.5

Hot Drinks

COFFEE

Coffee

CAPPUCCINO \$3.2

Iced Coffee

HALF HONEY SUCKLE LATTE \$3.9

Sides

SWEET POTATO

Ingredients Used

BISCUIT

Salads

UPTOWN SALAD \$7.1

COUNTRY FARM SALAD \$7.1

Sweets

BISCUIT NUGGETS \$4.5

NANNER PUDDIN \$6.1

Drinks

BEER

DRINKS

The Biscuit

2550 Pacific Ave, Dallas I-75226-1493, United States

Opening Hours:

Monday 08:00 -21:00
Tuesday 08:00 -21:00
Wednesday 08:00 -21:00
Thursday 08:00 -21:00
Friday 08:00 -03:00
Saturday 08:00 -03:00
Sunday 08:00 -03:00

Made with menuweb.menu

