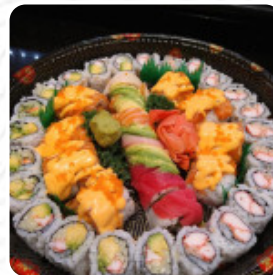




## ***Raku Hibachi Sushi Menu***

<https://menulist.menu>

348 Common Dr, Parkesburg, PA, 19365, United States  
(+1)4847125667



A **comprehensive [menu](#)** of **Raku Hibachi Sushi** from [Parkesburg](#) covering all 19 courses and drinks can be found here on the menu. For changing offers, please get in touch via phone or use the contact details provided on the website. What [Heather Stone](#) likes about Raku Hibachi Sushi:

Don't judge a restaurant by its location or front because you will do what we did and skip out on this place for way too long! Finally ate dinner here and SO GLAD WE DID, such great service and food. Our chef couldn't have been better, he was so fun and funny! We had a great family time and had a lot of leftovers!! They offer a military discount which is greatly appreciated. We will definitely be back! [read more](#). The premises on site are wheelchair accessible and can also be used with a wheelchair or physical limitations, and there is free WiFi.

What [Spencer Craven](#) doesn't like about Raku Hibachi Sushi:

If I could leave a zero I definitely would. I ordered take out last evening and we opted for the chicken and vegetable tempura with a side of fried rice. I was so disappointed. I honestly didn't think you could make tempura or fried rice badly, but sure enough it happened. I guess it's upsetting when you pay the ridiculous prices restaurants are setting for a 'dining experience' with them and it turns out I could... [read more](#). At Raku Hibachi Sushi from Parkesburg, scrumptious sushi (e.g., Nigiri and Inside-Out) is prepared for you, along with many other variations, always fresh with ingredients like fish, vegetables and meat, This restaurant offers a **catering service** that allows visitors to eat the dishes on-site or at the event. fresh vegetables, fish and meat are the main ingredients in the *easily digestible Japanese cuisine* of Raku Hibachi Sushi, Furthermore, the customers love the successful combination of different dishes with new and partially experimental ingredients - a good example of successful Asian Fusion.

# ***Raku Hibachi Sushi Menu***



## ***Salads***

SEAWEED SALAD

## ***Sushi Rolls***

SUSHI

## ***Side dishes***

MAISKOLBEN

## ***Chicken***

CHICKEN KATSU

## ***Appetizer***

TEMPURA

## ***Beef dishes***

FILET MIGNON

## ***Japanese specialties***

MISO SOUP

## ***Munchies***

SHRIMP TEMPURA

## ***Drinks***

DRINKS

***These types of dishes are  
being served***

FISH

SALAD

SOUP

## ***Ingredients Used***

MISO

SHRIMP

CHICKEN

POTATOES

CORN

# ***Raku Hibachi Sushi Menu***



## ***Raku Hibachi Sushi***

348 Common Dr, Parkesburg,  
PA, 19365, United States

### **Opening Hours:**

Monday 11:00 -21:30  
Tuesday 11:00 -21:30  
Wednesday 11:00 -21:30  
Thursday 11:00 -21:30  
Friday 11:00 -22:30  
Saturday 11:00 -22:30  
Sunday 11:00 -21:00

Made with [menulist.menu](https://menulist.menu)

 gallery image

