

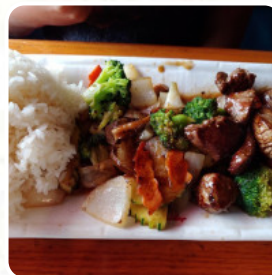
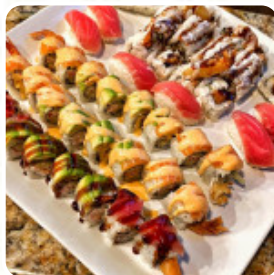


## ***Kobe Steak House Sushi Menu***

<https://menulist.menu>

210 Springtown Way, San Marcos, TX 78666, United States

+15123967200 - <https://www.kobesmtx.com/>



A complete menu of Kobe Steak House Sushi from San Marcos covering all **18** meals and drinks can be found here on the menu. For *seasonal or weekly deals*, please get in touch via phone or use the contact details provided on the website. What [User](#) likes about Kobe Steak House [Sushi](#):

There are actually a few places to find Sushi in San Marcos, but I can rave over Kobe! We sat fast (10 minutes or so) and soon had an order. The meal came out perfect salads first, a few appetizers, and to share an overwhelming dish of sushi! Our waitress was also very attentive and very pleasant throughout our meal. We had a little confusion in the parking lot, and when we asked to talk to the manager, the staff and... [read more](#). The restaurant and its rooms are wheelchair accessible and thus usable with a wheelchair or physiological disabilities, and there is complimentary WiFi. What [User](#) doesn't like about Kobe Steak House [Sushi](#):

The restaurant itself is nice. We got the Chicken teriyaki lunch plate and just by first looking at it I could tell the vegetables were over cooked but everything else looked great. Taste wise, the chicken had a burnt taste and was too salty, the fried rice was over seasoned as well. [read more](#). Kobe Steak House Sushi from San Marcos creates for you **scrumptious sushi (e.g., Maki and Sashimi)**, in addition to numerous other variations, always fresh with ingredients like fish, vegetables and meat, and a lot of fresh vegetables, fish and meat are used to prepare healthy Japanese menus.

# *Kobe Steak House Sushi Menu*



## *Sushi Rolls*

SUSHI

## *Drinks*

SAKE

## *Specialty Drinks*

PEACH

## *Restaurant Category*

VEGETARIAN

*These types of dishes are  
being served*

LOBSTER

SOUP

TUNA STEAK

SALAD

## *Ingredients Used*



ONION

SCALLOPS

GINGER

CHICKEN

VEGETABLES

TERIYAKI

CHICKEN TERIYAKI

SHRIMP

MEAT

# ***Kobe Steak House Sushi Menu***



## ***Kobe Steak House Sushi***

210 Springtown Way, San  
Marcos, TX 78666, United States

### **Opening Hours:**

Monday 11:30 -22:00  
Tuesday 11:30 -22:00  
Wednesday 11:30 -22:00  
Thursday 11:30 -22:00  
Friday 11:30 -23:00  
Saturday 11:30 -23:00  
Sunday 11:30 -22:00

Made with [menulist.menu](https://menulist.menu)

 gallery image

