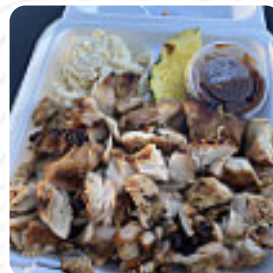
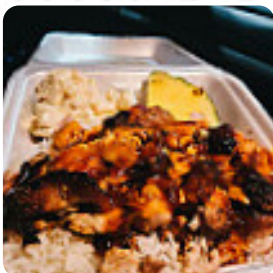




## ***Kona Cafe Hawaiian Barbecue And Catering Menu***

<https://menulist.menu>

4605 Main St, 97478, Springfield, US, United States  
+15417417136 - <http://konacafebbq.com/>



Here you can find the menu of Kona Cafe Hawaiian Barbecue And Catering in Springfield. At the moment, there are 17 menus and drinks on the card. You can inquire about seasonal or weekly deals via phone. What [User](#) likes about Kona Cafe Hawaiian Barbecue And Catering:

we went in an hour before they were closed and said they were sold out. it was not a very good first impression. we probably don't go back. revised: we decided to try again earlier to demand a final order. our food was ready when we arrived, the portion was substantial, the flesh was juicy and tender, and one application was enough to split between two people. the Mac salad could use a little spicy, but overall it wa... [read more](#). The diner is accessible and can therefore also be used with a wheelchair or physical limitations. What [User](#) doesn't like about Kona Cafe Hawaiian Barbecue And Catering:

they wanted to go there to eat on Monday, the 1st august at 19:20 clock, and they will not answer the phone for ordering. my family goes by and the sign is out, but there are people there, only bad business to say their open til 8pm and have a number to call after the order, but never pick up. come before closing only to see that they simply do not care and closed before the specified time! I like to support little o... [read more](#). During a meal, a good drink is essential. In this gastropub, you not only get delicious meals from the menu but also a comprehensive and particularly good variety of good beers and other alcoholic beverages that go well with the food, on the menu there are also a lot of **Asian menus**. With fresh fish, meat, as well as beans and rice, here they also **South American** cook, Furthermore, the customers of the restaurant enjoy the comprehensive variety of the various coffee and tea specialities that the establishment has available.

# *Kona Cafe Hawaiian Barbecue And Catering*



## *Salads*

POTATO SALAD

## *Non alcoholic drinks*

WATER

## *Main courses*

RIBS

## *Chicken*

ANANAS CHICKEN

## *Sauces*

BBQ SAUCE

## *Specialties*

TERIYAKI CHICKEN

## *Main*

PULLED PORK

## *Fried Rice*

FRIED RICE

## *Coffee*

COFFEE

## *Noodles and Rice Dishes*

PINEAPPLE FRIED RICE

*These types of dishes are being served*

NOODLES

SALAD

## *Ingredients Used*

CHICKEN TERIYAKI

PORK MEAT

TERIYAKI

MEAT

CHICKEN

# ***Kona Cafe Hawaiian Barbecue And Catering***



## ***Kona Cafe Hawaiian Barbecue And Catering***

4605 Main St, 97478, Springfield,  
US, United States

### **Opening Hours:**

Sunday 11:00-20:00  
Monday 11:00-20:00  
Tuesday 11:00-20:00  
Wednesday 11:00-20:00  
Thursday 11:00-20:00  
Friday 11:00-20:00  
Saturday 11:00-20:00

Made with [menulist.menu](https://menulist.menu)

 gallery image

