

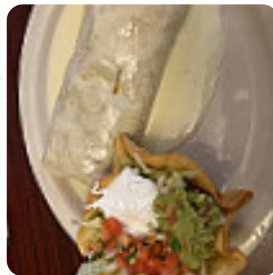


## El Toreo Menu

<https://menuweb.menu>

10020 N US Highway 31, 47201, Taylorsville, US, United States

+18125265850 - <https://www.eltoreomex.com/>



Here you can find the [menu](#) of El Toreo in Taylorsville. At the moment, there are **20** courses and drinks on the card.

# El Toreo Menu



## Non Alcoholic Drinks

WATER

## Entrées

SHRIMP COCKTAIL

## Snacks

CHIPS SALSA

## Side Dishes

RICE

## Starters & Salads

POTATO CHIPS

## Appetizer

CEVICHE

## Cocktail

MARGARITA

## Restaurant Category

MEXICAN

## Sauces

CHEESE SAUCE

SALSA

## Ingredients Used



SHRIMP

BEANS

CHEESE

## These Types Of Dishes Are Being Served

CHICKEN

QUESADILLAS

MEAT

## Mexican Dishes

ENCHILADAS

CHIMICHANGA

TACOS

BURRITO

# El Toreo

10020 N US Highway 31, 47201,  
Taylorsville, US, United States

### Opening Hours:

Monday 11:00-21:00  
Tuesday 11:00-21:00  
Wednesday 11:00-21:00  
Thursday 11:00-21:00  
Friday 11:00-21:30  
Saturday 11:00-21:30  
Sunday 11:00-21:00

Made with [menuweb.menu](https://menuweb.menu)

