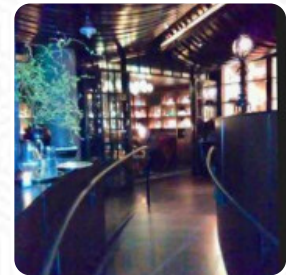
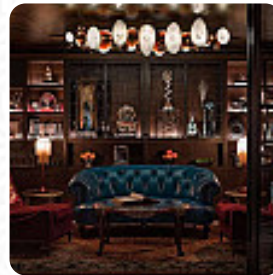




Deep Dive Menu

<https://menulist.menu>
620 Lenora St.WA 98119, Seattle, United States
(+1)2069009390 - <https://www.deepdiveseattle.com/>



The menu of Deep Dive from Seattle includes 17 dishes. On average, **dishes or drinks on the menu** cost about \$11.2. The categories can be viewed on the menu below. What User likes about Deep Dive:

Deep Dive was a romantic place for New Years Eve. We tried different cocktails- all were balanced and well crafted. For food we had the warm focaccia, grilled radicchio, the roasted celeriac, the black cod, and both deserts. While all of it was well executed that focaccia, black cod and celeriac were mind blowing! [read more](#).

The diner is accessible and can therefore also be used with a wheelchair or physical limitations. What User doesn't like about Deep Dive:

There was no host to greet us for 10 minutes as a line backed up. We as guests organized the line ourselves. Drinks were tiny, and overpriced and the service was subpar. The ice cube in my drink had more volume than the cocktail itself. Ambiance was lovely, mocktail and food menus looked nice. [read more](#). Deep Dive is famous for its traditional Canadian dishes, made from typical country products, Moreover, the drinks menu of this **gastropub** offers a good and especially extensive selection of beers from the region and the world that are definitely worth a try. There are also tasty American dishes, for example, burgers and grilled meat, They also present nice South American dishes to you in the menu.

Deep Dive Menu



Appetizers

FOCACCIA

Side dishes

CURED PORK \$9.0

Tapas Frías - Kalte Tapas

JAMÓN IBÉRICO DE BELLOTA \$18.0

Start

SMOKED MUSSEL TOAST \$8.0

Savory

GRUYERE GOUGERE \$6.0

Drinks

DRINKS

Sonoma Favorites

BAKED ARTICHOKE DIP \$13.0

Starters

RAW HAMA HAMA OYSTERS \$12.0

TARTARE

BAKED HAMA HAMA OYSTERS \$15.0

Ingredients Used

EGG

HALIBUT

BEEF

Dessert

CHEESECAKE

CHEESE PLATE \$15.0

APPLE BRANDY BREAD PUDDING \$9.0

Deep Dive Menu



CHOCOLATE TART

\$7.0

Deep Dive Menu



Deep Dive

620 Lenora St. WA 98119,
Seattle, United States

Opening Hours:

Monday 04:00 -22:00
Tuesday 04:00 -22:00
Wednesday 04:00 -22:00
Thursday 04:00 -23:00
Friday 04:00 -23:00
Saturday 04:00 -23:00
Sunday 04:00 -22:00

Made with menulist.menu

