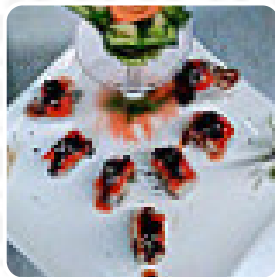
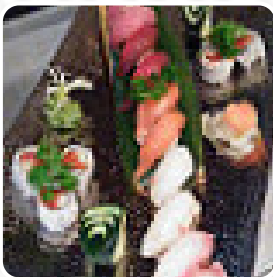




Mt. Fuji Hibachi Steak House Menu

<https://menulist.menu>
4150 Barton Crk, Lewisville, United States
+19723179888



On this homepage, you can find the complete menu of Mt. Fuji Hibachi Steak House from Lewisville. Currently, there are 19 menus and drinks up for grabs. For [changing offers](#), please contact the owner of the restaurant directly. You can also contact them through their website. What [User](#) likes about Mt. Fuji Hibachi Steak House: Great Hibachi, very cool setup. The food is good. One thing to note, each grill is walled in its own glass Kubbie. nice to contain noise, but it also catches warmth. It can be warm. Great for the family. [read more](#). What [User](#) doesn't like about Mt. Fuji Hibachi Steak House:

With limited [sushi](#) options, elbows made to elbows with strangers with plenty of space elsewhere for an unpleasant experience it is about me that this place has a 4 star rating. We never saw the waitress after they brought out soup and salad. Never received refills and the empty bowls split the limited table area. With the only people in the restaurant all the time two Hibachi tables half full I expected better. The f... [read more](#). The customers love it when Asian cuisine meets a bit of creativity. That's exactly what you can expect at the Mt. Fuji Hibachi Steak House from Lewisville, with its **unconventional Asian fusion cuisine** - the right mix of traditional meets the adventurous world of fusion cuisine, there are also fine [vegetarian](#) dishes on the menu. Not to be left out is the large diversity of **coffee and tea specialties** in this restaurant, and *healthy Japanese meals* are being made with lots of freshly harvested vegetables, fish and meat.

Mt. Fuji Hibachi Steak House Menu



Non alcoholic drinks

ICED TEA

Sushi Rolls

SUSHI

Beef dishes

FILET MIGNON

Insalate

AVOCADO SALAD

Kids Meal

KIDS MEAL

Fried Rice

FRIED RICE

Hot drinks

TEA

Restaurant Category

STEAKHOUSE

Ingredients Used

CHICKEN

SCALLOPS

AVOCADO

These types of dishes are being served

FISH

SALAD

SOUP

TUNA STEAK

FILET

Mt. Fuji Hibachi Steak House Menu



Mt. Fuji Hibachi Steak House

4150 Barton Crk, Lewisville,
United States

Opening Hours:

Monday 11:00 -22:00
Tuesday 11:00 -22:00
Wednesday 11:00 -22:00
Thursday 11:00 -22:00
Friday 11:00 -23:00
Saturday 11:00 -23:00
Sunday 12:00 -22:00

Made with menulist.menu

