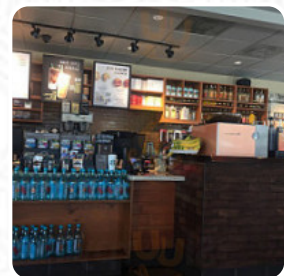
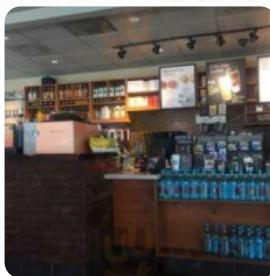
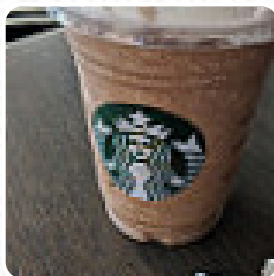




## *Starbucks Menu*

<https://menulist.menu>  
680 Ala Moana Blvd, Honolulu I-96813-5406, United States  
**+18085212112**



The place from Honolulu offers **18** different **dishes and drinks** on [the card](#) at an average price of \$4.3. What [User](#) likes about Starbucks:  
Great service as usual! The staff is super nice and helpful to find new drinks to enjoy! Loves all the cups they have on the display. The place is really big and has plenty of space to chill on your laptop. [read more](#). With the large diversity of **coffee and tea specialties**, a visit to Starbucks becomes even more attractive.

# Starbucks Menu



## Snacks

VANILLA BISCOTTI WITH ALMONDS \$2.0

## Condiments

SYRUP

## Drinks

DRINKS

## Snacks & Sweets

MADELEINES \$2.9

## Ingredients Used

CARAMEL

*These types of dishes are being served*

ICE CREAM

## Lunch

TOMATO MOZZARELLA SANDWICH LUNCH \$6.9

CHICKEN CAPRESE SANDWICH LUNCH \$8.0

## Bakery

SPROUTED GRAIN VEGAN BAGEL \$2.7

EVERYTHING BAGEL \$2.7

## Coffee

MOCHA

CAFÉ

## Hot Breakfast

BACON, GOUDA, EGG BREAKFAST SANDWICH \$5.2

REDUCED-FAT TURKEY BACON CAGE FREE EGG WHITE SANDWICH \$5.0

## Yogurt & Custard

SIGGI'S YOGURT CUP 0% VANILLA \$3.2

STRAWBERRY OVERNIGHT GRAINS \$5.0

# Starbucks Menu



## Starbucks

680 Ala Moana Blvd, Honolulu I-  
96813-5406, United States

### Opening Hours:

Monday 04:30 -22:00  
Tuesday 04:30 -22:00  
Wednesday 04:30 -22:00  
Thursday 04:30 -22:00  
Friday 04:30 -22:00  
Saturday 04:30 -22:00  
Sunday 05:30 -21:00

Made with [menulist.menu](https://menulist.menu)

