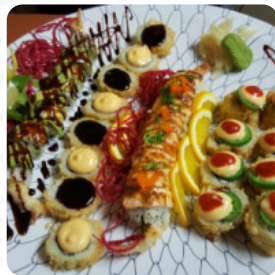
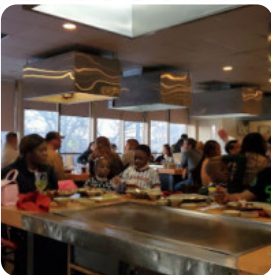




## ***Benihana Menu***

<https://menulist.menu>

1139 N State St, Milwaukee, United States Of America  
+19543419622,+14142700890 - <https://www.benihana.com/>



Here you can find the [menu](#) of Benihana in Milwaukee. At the moment, there are **12** dishes and drinks on the food list. You can inquire about *seasonal or weekly deals* via phone. What [User](#) likes about Benihana: As usual for us we had great service here, our saver was Joseph and out Chef was Roy both were amazing! Our table ended up being 5 people and we had a great time. We were celebrating a birthday and they were celebrating good grades. Roy indicated he was a new Chef (2months) but he handled everything perfectly and we had specialty requests. Great job by both Joseph and Roy! [read more](#). What [User](#) doesn't like about Benihana:

Benihana is always yummy. I go every year to use my buy \$30 get \$30 birthday certificate I get from them. You sign up on website. We ordered Habachi Chicken with fried rice. You must always order 2 bowls of rice, one is not enough. [read more](#). In the Benihana from Milwaukee, a lot of freshly harvested vegetables, fish, and meat are used to prepare **healthy, delicious Japanese meals**.

# ***Benihana Menu***



## ***Salads***

SIDE SALAD

## ***Sushi Rolls***

SUSHI

## ***Side dishes***

RICE

## ***Beef dishes***

FILET MIGNON

## ***Schnitzel & Steaks***

PUTENSTEAK

## ***Fried Rice***

FRIED RICE

***These types of dishes are  
being served***

SOUP

TUNA STEAK

SALAD

## ***Ingredients Used***

MEAT

CHICKEN

SALMON

SHRIMP

VEGETABLES

BEEF

# *Benihana Menu*



## *Benihana*

1139 N State St, Milwaukee,  
United States Of America

**Opening Hours:**  
Saturday 16:00-22:00  
Sunday 16:00-21:00

 gallery image