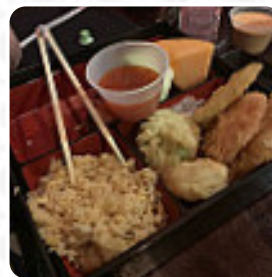




Fuji Japanese Steakhouse Sushi Menu

<https://menulist.menu>

1731 Eglin St, 57701, Rapid City, US, United States
+16057218886 - <https://fujisteakhouse-sd.com/>



Here you can find the [menu](#) of Fuji Japanese Steakhouse Sushi in [Rapid City](#). At the moment, there are 17 menus and drinks on the menu. You can inquire about **seasonal or weekly deals** via phone. What [User](#) likes about Fuji Japanese Steakhouse [Sushi](#):

initially the service was very slow. Once the chef arrived, it came back to the way. fun to prepare them for you. only a real disappointment was chairs too low. almost felt like we were sitting near the floor. [read more](#). The premises in the restaurant are wheelchair accessible and can also be used with a wheelchair or physiological disabilities, Depending on the weather, you can also sit outside and eat and drink. What [User](#) doesn't like about Fuji Japanese Steakhouse Sushi:

Drove by this restaurant for years and never stopped. We decided to stop there for dinner. The good was excellent, though a little bland. The service was great and the restaurant was full at about 5:00 pm. We had the Udon Noodles with chicken, very good. There are 4 hibachi tables, will try that next time. We don't care for sushi so didn't try any of that. Very pleasant experience. [read more](#). In the Fuji Japanese Steakhouse Sushi from Rapid City, a lot of freshly harvested vegetables, fish, and meat are used to prepare **easy-to-digest, tasty Japanese meals**, on the daily specials there are also a lot of Asian dishes. The Asian fusion cuisine is also an important part of Fuji Japanese Steakhouse Sushi. Anyone who finds the everyday and generally known meals too ordinary can here approach with a willingness to experiment and try some unexpected combination of ingredients enjoy, and you can look forward to the fine typical [seafood](#) cuisine.

Fuji Japanese Steakhouse Sushi Menu



Sushi Rolls

SUSHI

Main Course

GYOZA

Spezial-Nudeln

UDON

Drinks

DRINKS

Appetizer -A

SPRING ROLL

Restaurant Category

STEAKHOUSE

Ingredients Used

CHOCOLATE

SHRIMP

EEL

TUNA

CHICKEN

***These types of dishes are
being served***

SALAD

LOBSTER

NOODLES

APPETIZER

SOUP

TUNA STEAK

Fuji Japanese Steakhouse Sushi Menu



Fuji Japanese Steakhouse Sushi

1731 Eglin St, 57701, Rapid
City, US, United States

Opening Hours:

Monday 11:00-14:30 16:30-21:30
Tuesday 11:00-14:30 16:30-21:30
Wednesday 11:00-14:30 16:30-
21:30
Thursday 11:00-14:30 16:30-21:30
Friday 11:00-14:30 16:30-22:00
Saturday 11:00-22:00
Sunday 11:00-21:00

Made with menulist.menu

