

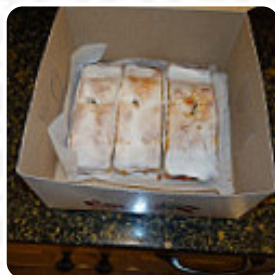
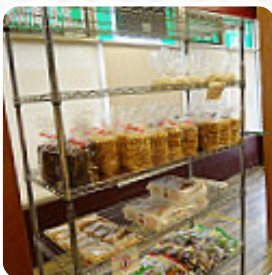


Piro's Bakery Menu

<https://menulist.menu>

300 Merrimack St, 01844, Methuen, US, United States

(+1)9786861872 - <https://www.menuPIX.com/massachusetts/nc/210021/2/Methuen-Bakeries>



On this website, you can find the [complete menu](#) of Piro's Bakery from Methuen. Currently, there are **13** dishes and drinks up for grabs. For seasonal or weekly deals, please contact the restaurant owner directly. You can also contact them through their website. What [User](#) likes about Piro's Bakery:

I have never met a piros dessert that I do not love! Italian cookies and biscotti are great, as well as the fancier creamy specialties; cream puffs, bismarck's, etc. that said we don't pamper almost as often as we want because the prices are too high, and seem to have risen every time we go in. Maybe that's a good thing to keep the plagues away. [read more](#). The premises on site are wheelchair accessible and can also be used with a wheelchair or physiological limitations, and there is free WiFi. If you want to try fine *American meals like burgers or barbecue*, Piro's Bakery from Methuen is the place to be, There are also delicious South American cuisine on the menu. If you'd like something after-dinner treat for dessert, Piro's Bakery does not disappoint with its extensive **selection of desserts**, Don't miss the chance to have the delicious [pizza](#), prepared straight out from the oven in an traditional way.

Piro's Bakery Menu



Main courses

LASAGNA

Little things

ARANCINI

Shakes and Malts

STRAWBERRY SHORTCAKE

Ingredients Used

BANANA

Dessert

COOKIES

CREPES

Restaurant Category

DESSERT

ITALIAN

SICILIANA

*These types of dishes are
being served*

PIZZA

LOBSTER

BREAD

DESSERTS

Piro's Bakery Menu



Piro's Bakery

300 Merrimack St, 01844,
Methuen, US, United States

Opening Hours:

Monday 11:00 -20:00
Tuesday 11:00 -20:00
Wednesday 11:00 -20:00
Thursday 10:00 -20:00
Friday 10:00 -20:00
Saturday 10:00 -20:00
Sunday 10:00 -18:00

Made with menulist.menu

