

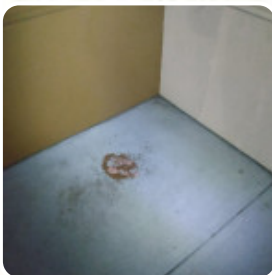


Men-bei Noodle Menu

<https://menulist.menu>

1349 Coleman Ave, Santa Clara, United States

(+1)4085881557 - <https://www.facebook.com/pages/Men-Bei-Ramen/510762419029281>



[The Menu](#) of Men-bei Noodle from Santa Clara contains about **17** different menus and drinks. On average, you pay for a dish / drink about \$10.4. What [I Bernardino](#) likes about Men-bei Noodle: Perfect little spot for genuine ramen. Creamy vegan broth was bowl to mouth good. Avoid the lunch crowd from 12 noon to perhaps 1 pm. They close between 2:30 pm to 5 pm. There was nobody when I came in at 11:30 am but everybody started trickling in right at noon. The place was starting to get packed just as I remember it being crowded years ago when I last visited. [read more](#). The restaurant is accessible and can therefore also be used with a wheelchair or physical limitations. What [Justin Lee](#) doesn't like about Men-bei Noodle: We each got the Men-Bei Ramen. Portion size was generous and the waiter was really nice however the ramen is nothing special. For \$15 its alright but probably wouldn't get it again. The other dishes looked interesting but not sure if I'd come back just based on the ramen. [read more](#). In the Men-bei Noodle from Santa Clara, a lot of emphasis is placed on the preparation of **easy-to-digest, delicious Japanese dishes** with fresh vegetables, fish and meat.

Men-bei Noodle Menu



Non alcoholic drinks

ICED TEA \$3.3

Appetizers

SHU-MAI \$7.0

Pasta

YAKISOBA \$14.3

Main courses

RIBS

Rice

CURRY RICE \$13.5

Main Course

GYOZA

Noodle

RAMEN

Fried Rice

FRIED RICE \$14.5

Platos

SHIO RAMEN \$13.0

Cold Soft Drinks

CALPICO \$3.3

Noodles without Soup

HIYASH CHUKA \$14.5

Restaurant Category

VEGAN

Ramen

SHOYU RAMEN \$13.0

CHA-SHU \$8.0

Ingredients Used

CHICKEN

MISO

EGG

Men-bei Noodle Menu



Men-bei Noodle

1349 Coleman Ave, Santa Clara,
United States

Opening Hours:

 gallery image