

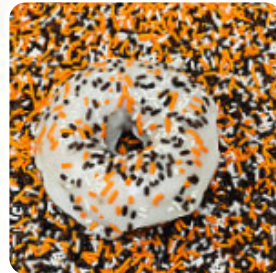
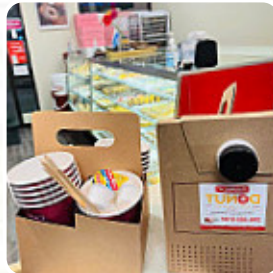


Family Donut Menu

<https://menulist.menu>

2100 N Northgate Way, Seattle, United States

+12063689107 - <https://www.facebook.com/familydonutnorthgate>



The restaurant from Seattle offers **18** different dishes and drinks on the card at an average price of \$1.6. What [User](#) likes about Family Donut: great eating and seems like a really nice family that runs the load. I appreciate that they have a free donut bite on a stock to a little girl waiting in the line. [read more](#). The diner is accessible and can therefore also be used with a wheelchair or physiological disabilities. With the large selection of coffee and tea specialties, a visit to Family Donut becomes even more attractive, Inthemorning a versatile brunch is offered here. At the bar, you can still relax after the meal (or during it) with an *alcoholic or non-alcoholic drink*, Moreover, the drinks menu of this **gastropub** offers a good and especially large selection of beers from the region and the world that are definitely worth a try.

Family Donut Menu



Little things

CINNAMON ROLL

Cocktails

OLD FASHION \$1.0

Donuts

FILLED DONUT \$1.5

Homemade cakes

DEVILS FOOD \$1.0

French

CROISSANT

Donut Holes

GLAZED \$1.3

Calzones, Stromboli and Turnovers

TURN OVER \$1.9

Family Donuts

MAPLE CHOC BAR \$1.3

Dessert

DONUTS

DONUT

Ingredients Used

CHOCOLATE

BUTTER

Beverages

LARGE MILK \$1.9

CAN SODA \$1.0

HOT CHOC \$2.0

Coffee

ESPRESSO

COFFEE \$1.4

CAFÉ

Family Donut Menu



Family Donut

2100 N Northgate Way, Seattle,
United States

Opening Hours:

Monday 05:00 -14:00
Wednesday 05:00 -14:00
Thursday 05:00 -14:00
Friday 05:00 -14:00
Saturday 05:00 -14:00
Sunday 05:00 -14:00

Made with menulist.menu

 gallery image

