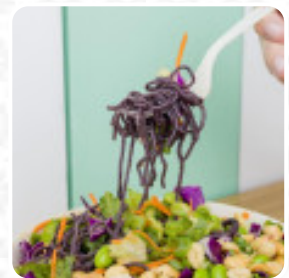
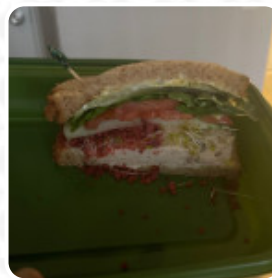
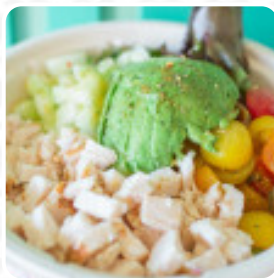




Jan's Health Menu

<https://menuweb.menu>

2961 Michelson Drive, Irvine, 92612, United States Of America
+19495350687 - <https://www.janshealthbar.com/>



A complete [menu](#) of Jan's Health from Irvine covering all 17 courses and drinks can be found here on the food list. Jan's Health Bar in Irvine offers a delightful selection of American and North American cuisine. Experience the inviting atmosphere at either of their 2 locations by calling (949) 535-0687 for more information.

Jan's Health Menu



Smoothies

SMOOTHIE

Sandwiches

TUNA SALAD SANDWICH

Drinks

SMOOTHIES

Soft Drinks

JUICE

Salads

TUNA SALAD

CHICKEN SALAD

These Types Of Dishes Are Being Served

PANINI

SALAD

ROASTED CHICKEN

CHICKEN

WRAP

Ingredients Used



CHICKEN BREAST

PEANUT BUTTER

BANANA

BUTTER

TUNA

AVOCADO

Jan's Health

2961 Michelson Drive, Irvine,
92612, United States Of America

Opening Hours:

Monday 08:00 -18:00
Tuesday 08:00 -18:00
Wednesday 08:00 -18:00
Thursday 08:00 -18:00
Friday 08:00 -18:00
Saturday 08:00 -18:00
Sunday 08:00 -17:00

Made with menuweb.menu

