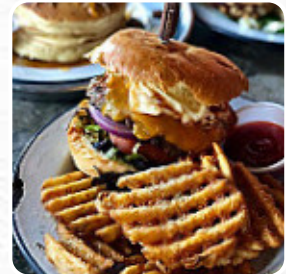




Ethyl Tank Menu

<https://menulist.menu>
19 E 13th Ave, Columbus, United States
+16148176997,+16149470140 - <http://www.ethylandtank.com/>



On this website, you can find the complete menu of Ethyl Tank from Columbus. Currently, there are **8** courses and drinks up for grabs. For changing offers, please contact the restaurant owner directly. You can also contact them through their website. What [Mackenzie Balle](#) likes about Ethyl Tank:

Surprisingly great food! I just ended up at Ethyl Tank for an event, but was pleasantly surprised by how tasty all the food was! We tried the fried chicken, the quesadillas (chicken and veggie), and the waffle fries and I would go back for any of them. [read more](#). In nice weather you can even eat in the outdoor area, and there is free WiFi.

What [Jamison Law](#) doesn't like about Ethyl Tank:

We ordered takeout, it was disappointing. Food was less than mid. The salad was soaked with dressing, wilted, and warm since the chicken sandwiches were placed on top of it. Also somehow tasted like...lawn. Fries were limp and squishy. Garlic cheese curds were just hollow blobs of rubber. The burger and chicken sandwiches were simply not good. A complete miss. We ended up throwing about half of the food away. [read more](#). At Ethyl Tank in Columbus, you get a tasty brunch for breakfast and you can eat as much as you want indulge, and you can try fine American menus like Burger or Barbecue. At the bar, you can still relax after the meal (or during it) with an **alcoholic or non-alcoholic drink**, And of course, you should also try the *tasty burgers*, with sides such as fries, salads, or wedges served.

Ethyl Tank Menu



Alcoholic Drinks

CHAMPAGNE

Starters & Salads

FRIES

Chicken

FRIED CHICKEN

Happy Hour - Classic Cocktails

BLOODY MARY

Vodka

TITO'S

Sweets & Desserts

WAFFLE FRIES

Liquor

CROWN ROYAL

Blanco

ESPOLON

Shaken

GARDEN MULE

SCOTCH WHISKY / IRISH WHISKEY

JAMESON

Drinks

DRINKS

Plates Brunch

WAFFLE

Ingredients Used

CHICKEN

These types of dishes are being served

QUESADILLAS

Cocktail Bottles

LILLY'S LAVISH LAVENDER LEMONADE

PRICKLY TONGUE MARGARITA

Ethyl Tank Menu



Ethyl Tank

19 E 13th Ave, Columbus, United States

Opening Hours:

Tuesday 12:00 -24:00
Wednesday 12:00 -24:00
Thursday 12:00 -02:00
Friday 12:00 -02:00
Saturday 10:00 -02:00
Sunday 10:00 -18:00

Made with menulist.menu

