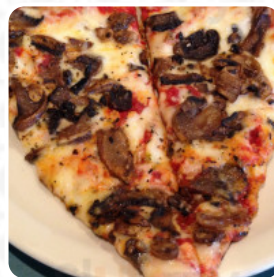
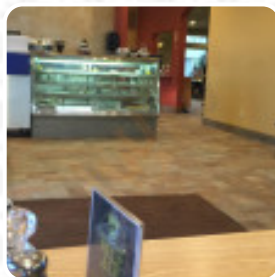




Sal's Pizza Pasta Menu

<https://menulist.menu>

29 Spencer Plain Rd, Old Saybrook I-06475-4001, United States
+18603998331



Here you can find the menu of Sal's Pizza Pasta in Old Saybrook. At the moment, there are 17 dishes and drinks on the menu. You can inquire about **changing offers** via phone. What User likes about Sal's Pizza Pasta: Best pizza around.. Whenever we want pizza, no question where we go. Delicious every time. A disadvantage, they seem to offer many different desserts that they usually do.. That upsets me. Other than that, no complaints! [read more](#). What User doesn't like about Sal's Pizza Pasta:

First time there ordered out chicken alfredo broccoli. It was the worst I've ever had. Pasta all stuck together, Alfredo sauce had a curdled texture the chicken looked like it was reheated many times and tasted days old. I was told by a friend they made the best chicken Alfredo around I definitely disagree it was terrible and 20\$ wasted will Never go back. Needless to say when I walked it I stood there for ever as eve... [read more](#). In Sal's Pizza Pasta in Old Saybrook, they prepare *crispy pizza* using a time-honored method, served fresh, **delicious vegetarian recipes** are also in the menu available. In addition, you can expect typical Italian cuisine with delicious classics like pizza and pasta.

Sal's Pizza Pasta Menu



Deutsche Spezialitäten

FRIKADELLE

Pasta Zutaten

MEATBALLS

Hot Italian Subs

MEATBALL SUB

Drinks

DRINKS

Sopas Y Potages

SOPA DE POLLO

Restaurant Category

ITALIAN

Ingredients Used

CHICKEN

CHEESE

MILK

GARLIC

EGG

These types of dishes are being served

SALAD

SOUP

BREAD

PASTA

DESSERTS

PIZZA

Sal's Pizza Pasta Menu



Sal's Pizza Pasta

29 Spencer Plain Rd, Old
Saybrook I-06475-4001, United
States

Opening Hours:

Monday 11:00 -21:00
Tuesday 11:00 -21:00
Wednesday 11:00 -21:00
Thursday 11:00 -21:00
Friday 11:00 -21:00
Saturday 11:00 -21:00
Sunday 11:00 -21:00

Made with menulist.menu

 gallery image

