

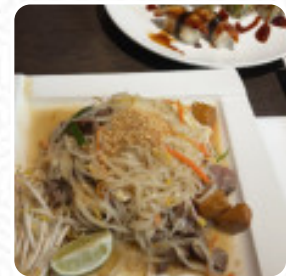


## ***Koto Hibachi Steak House Menu***

<https://menulist.menu>

795 Dalton Ave., Pittsfield I-01201, United States

+14137707128 - <http://www.kotohibachisteakhouse.com/>



On this webpage, you can find the complete menu of Koto Hibachi Steak House from [Pittsfield](#). Currently, there are 17 courses and drinks up for grabs. For changing offers, please contact the restaurant owner directly. You can also contact them through their website. What [User](#) likes about Koto Hibachi Steak House: Great Hibachi target. Loved the quality of food here. [Sushi](#) reels had a few unique options, were super made and delicious. Hibachi was the usual show and didn't say disappointed. Hibachi food quality was on site, especially the sukiyaki Steak and the Steak Scallop options. Waiting time after sitting at a full table was something on the longer side about half an hour for the cook to come. Bottom line would like to go... [read more](#). What [Andi Elliott](#) doesn't like about Koto Hibachi Steak House:

Family liked the food. Unfortunately I couldn't eat mine. Apparently the server did not understand and had difficulty understanding English. I ordered a vegetable version but was served pork, which I don't eat. Then argued with me about it and refused to return it. So, I didn't get to eat dinner. I won't be going back anytime soon. [read more](#). At Koto Hibachi Steak House from Pittsfield you have the opportunity to **savor delicious vegetarian courses**, in which no trace of animal meat or fish was processed, It's possible to chill out at the bar with a [freshly tapped beer](#) or other alcoholic and non-alcoholic drinks. Of course, the right drink to accompany a meal is a must; for this purpose, this gastropub offers you a large diversity of fine, regional alcoholic beverages like beer or wine, On the menu there are also several **Asian menus**.

# *Koto Hibachi Steak House Menu*



## *Sushi Rolls*

SUSHI

## *Mains*

FILLET

## *Appetizer*

TEMPURA

## *Meat*

STEAKHOUSE

## *Sonstiges*

SASHIMI

## *Fried Rice*

FRIED RICE

*These types of dishes are being served*



SALAD

TUNA STEAK

APPETIZER

## *Ingredients Used*



SHRIMP

TUNA

BEEF

SCALLOPS

SCALLOP

VEGETABLES

PORK MEAT

# ***Koto Hibachi Steak House Menu***



## ***Koto Hibachi Steak House***

795 Dalton Ave., Pittsfield I-  
01201, United States

### **Opening Hours:**

Monday 11:00 -21:00  
Tuesday 11:00 -21:00  
Wednesday 11:00 -21:00  
Thursday 11:00 -21:00  
Friday 11:00 -21:30  
Saturday 11:00 -21:30  
Sunday 00:00 -21:00

Made with [menulist.menu](https://menulist.menu)

 gallery image

