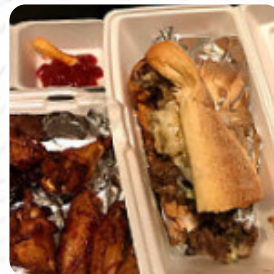




## ***Port City Cheesesteak Company Menu***

<https://menulist.menu>

204 Princess St, Wilmington I-28401-3951, United States



Here you can find the [menu](#) of **Port City Cheesesteak Company** in Wilmington. At the moment, there are 18 dishes and drinks on the card. You can inquire about [seasonal or weekly deals](#) via phone. What [User](#) likes about Port City Cheesesteak Company:

A very cool experience and honestly the best burger I had in a very long time! The food is very cheap! You're looking for between \$8 and \$12 per remedy. You have 32 craft beers on tap, so it is a great place to hang with your friend. The staff is also very friendly. Thank you for a great time! [read more](#). Port City Cheesesteak Company from Wilmington is known for its exquisite burgers, to which delicious fries, salads and other sides are provided, You can take a break at the bar with a *freshly tapped beer* or other alcoholic and non-alcoholic drinks.

Of course, the right drink to accompany a meal is a must; for this purpose, this **gastropub** offers you a large selection of scrumptious, local alcoholic beverages like beer or wine.

# *Port City Cheesesteak Company Menu*



## *Alcoholic Drinks*

BEER

## *Extras*

SWEET POTATO

## *Starters & Salads*

FRIES

## *Dessert*

MILKSHAKES

## *Fingerfood*

ZWIEBELRINGE

## *Subs*

PHILLY

## *Hot Italian Subs*

CHEESE STEAK

## *Restaurant Category*

DESSERT

BBQ SAUCE

*These types of dishes are  
being served*

BURGER

TUNA STEAK

## *Ingredients Used*

CHEESE

ONION

BUTTER

CHOCOLATE

# *Port City Cheesesteak Company Menu*



## *Port City Cheesesteak Company*

204 Princess St, Wilmington I-  
28401-3951, United States

### **Opening Hours:**

Monday 11:00-22:00  
Tuesday 11:00-22:00  
Wednesday 11:00-22:00  
Thursday 11:00-22:00  
Friday 11:00-23:00  
Saturday 11:00-23:00  
Sunday 12:00-18:00

Made with [menulist.menu](https://menulist.menu)

