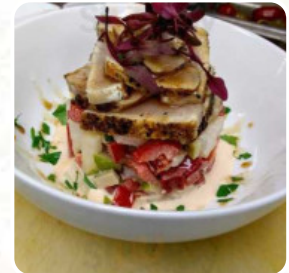




A-soshel Menu

<https://menulist.menu>
3056 Village Park Dr, Plover, United States Of America
+17159979500 - <http://a-soshel.com/>



Here you can find the menu of A-soshel in Plover. At the moment, there are 16 courses and drinks on the menu. You can inquire about *seasonal* or *weekly deals* via phone. What [AmyL](#) likes about A-soshel: My only complaint was that the experience was too fast! We were in and out with app, drinks and dinner in under an hour ; Would have liked to have felt less rushed. Staff was great though [read more](#). In pleasant weather you can even eat in the outdoor area. At A-soshel in Plover, there's a diverse brunch in the morning where you can indulge feast, They also present scrumptious South American menus to you in the menu. Viewing various sports games and matches is equally one of the best parts when visiting this **sports bar**, and you can indulge in tasty American menus like **Burger** or **Barbecue**.

A-soshel Menu



Pasta

CARBONARA

Steaks

RIBEYE STEAK

Main Course

PORK BELLY

Drinks

DRINKS

Asador's Steaks

RIBEYE

Restaurant Category

MEDITERRANEAN

DESSERT

These types of dishes are being served



BURGER

SOUP

TUNA STEAK

APPETIZER

Ingredients Used

SALMON

CHOCOLATE

SCALLOPS

PORK MEAT

CHICKEN

A-soshel Menu



A-soshel

3056 Village Park Dr, Plover,
United States Of America

Opening Hours:

Monday 16:00 -22:00
Tuesday 16:00 -22:00
Wednesday 16:00 -22:00
Thursday 16:00 -22:00
Friday 16:00 -23:30
Saturday 09:30 -23:30
Sunday 09:30 -22:00

Made with menulist.menu

