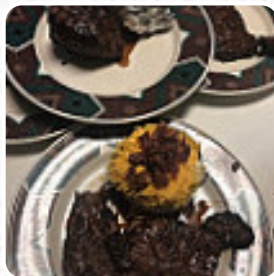




Valentine's Menu

<https://menulist.menu>
205 S State St, 62243, Freeburg, US, United States
+16185399169 - <http://www.valentinesdining.com/>



Here you can find the [menu of Valentine's](#) in Freeburg. At the moment, there are 18 dishes and drinks on the menu. You can inquire about seasonal or weekly deals via phone. What [User](#) likes about Valentine's: the steaks were perfectly cooked phenomenally. only problems I had were not a giant cry, the calamari were not fresh, given the small town that was expected. I had the best meat cut. a filet mignon. good value of the short drive down rt 15. [read more](#). The restaurant and its rooms are wheelchair accessible and thus reachable with a wheelchair or physiological limitations. What [User](#) doesn't like about Valentine's: I HAVE BEEN GOING TO VALENTINE'S RESTAURANT SINCE THE 1980'S, BUT LAST TUESDAY EVENING AROUND 5 PM, WE GOT THE WORST STEAKS-NOT JUST ME BUT BOTH OF US. HE HAD THE LARGE FILLET WHICH WAS EXTREMELY TOUGH AND I HAD THE LARGE SIRLOIN WHICH HAD A LARGE AMOUNT OF GRIZZLE AND FAT. WHAT HAPPENED TO THIS RESTAURANT???? [read more](#). If you want to try fine *American dishes like burgers or barbecue*, Valentine's from [Freeburg](#) is the place to be, There are also delicious **South American** dishes on the menu. The kitchen of the Valentine's also offers many international dishes, and you can look forward to the tasty typical seafood cuisine.

Valentine's Menu



Salads

SALAD

Meat

STEAKHOUSE

Beef dishes

FILET MIGNON

Indian

FOLIENKARTOFFEL

Soup and Salad

DINNER SALAD

Asador's Steaks

RIBEYE

Main courses

CALAMARI

SIDE SALAD

Ingredients Used

MEAT

CHEESE

BLUE CHEESE

POTATOES

These types of dishes are being served



SALAD

FILET

TUNA STEAK

LOBSTER

Valentine's Menu



Valentine's

205 S State St, 62243, Freeburg,
US, United States

Opening Hours:

Tuesday 16:00-20:00
Wednesday 16:00-20:00
Thursday 16:00-20:00
Friday 16:00-20:00
Saturday 16:00-20:00
Sunday 16:00-20:00

Made with menulist.menu

 gallery image

