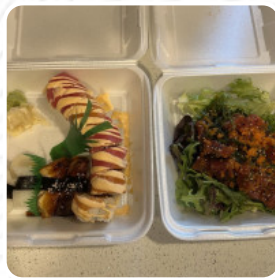




California Monster Sushi Menu

<https://menulist.menu>
25620 104th Ave SE, 98030, Kent, US, United States
+12538561135 - <http://calimonstersushi.com/>



The restaurant from Kent offers 17 different *dishes and drinks on [the card](#)* at an average price of \$8.7. What [User](#) likes about California Monster [Sushi](#):

This place is so fire, I've been going to this place for years. And they have only stepped their game up since. Highly recommend. You will not be disappointed...ever [read more](#). **scrumptious sushi** (e.g., **Maki and Te-Maki**), as well as in numerous other variations, are prepared for you by California Monster Sushi from Kent, with fresh ingredients like fish, vegetables and meat, and **easily digestible Japanese meals** are being made with lots of fresh vegetables, fish and meat.

California Monster Sushi Menu



Non alcoholic drinks

MONSTER

Nigiri

2 PIECES AVOCADO SUSHI \$6.0

King California Rolls

DRAGON ROLL

Sandwiches

CALIFORNIA SANDWICH

Side dishes

6 PIECES GYOZA \$5.0

Appetizer

EGG ROLL 2 PIECES \$5.0

Sushi

2 PIECES ALBACORE SUSHI \$6.0

Chef's Special Rolls

8 PIECES DRAGON ROLL \$12.0

These types of dishes are being served

SALAD

Sashimi

2 PIECES ALBACORE SASHIMI \$6.0

2 PIECES AVOCADO SASHIMI \$6.0

Sushi Rolls

8 PIECES SHOGUN ROLL \$13.0

SUSHI

Sushi Chef's Signature Rolls

9 PIECES CHERRY BLOSSOM ROLL \$14.0

9 PIECES ORANGE BLOSSOM ROLL \$14.0

Ingredients Used

TERIYAKI

CHICKEN

California Monster Sushi Menu



California Monster Sushi

25620 104th Ave SE, 98030,
Kent, US, United States

Opening Hours:

Tuesday 11:00 -21:30
Wednesday 11:00 -21:30
Thursday 11:00 -21:30
Friday 11:00 -21:30
Saturday 11:00 -21:30
Sunday 11:00 -21:30

Made with menulist.menu

 gallery image

