

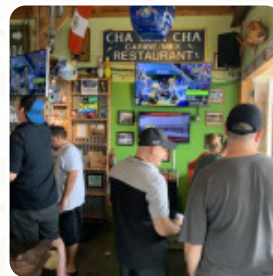


Dolphin Spit Saloon Menu

<https://menulist.menu>

75-5629 Kuakini Hwy, Kailua-Kona I-96740-1664, United States

+18083267748



Here you can find the [menu](#) of [Dolphin Spit Saloon](#) in Kailua-Kona. At the moment, there are 17 courses and drinks on the menu. You can inquire about **seasonal or weekly deals** via phone. What [User](#) likes about Dolphin Spit Saloon:

We thought we would give the Big Island another chance to serve a good Mai Tai after the terrible we had at Huggo. Dolphin Spit Saloon didn't disappoint. The Mai Tai was twice as big, plus half the cost and it tasted super. restored my faith! Dolphin Spit wants it to be on the can! a saloon nothing imagination, just a simple and honest bar with friendly staff. [read more](#). When the weather conditions is pleasant you can also eat and drink outside, And into the accessible rooms also come visitors with wheelchairs or physiological limitations. WiFi is available free of charge. What [User](#) doesn't like about Dolphin Spit Saloon:

It's too bad that you have to leave at least one star for a place that deserves none. This is actually the worst bar I have ever been to. The drunk, obnoxious pink haired "B" behind the bar is pure entertainment however. It's fun to see how much money she chases out of that place with her screaming, ranting, and drunken babble. But, maybe you could borrow some of the Botox from her lips to fill your own, 'cause she's... [read more](#). Want to spice up your eating and drinking routine? Come to this **sports bar** and enjoy a variety of small snacks and menus while watching live football, tennis or Formula 1 games, because just eating and drinking is too boring!, Also, the drinks menu at this place is exceptional and offers a significant and varied assortment of both local and international beers, which are definitely worth a try. After the meal (or during it), you can also relax at the bar with a alcoholic or non-alcoholic drink, Especially, many visitors are looking forward to the diverse, delectable [Mexican](#) cuisine.

Dolphin Spit Saloon Menu



Alcoholic Drinks

BEER

Pizza

PIZZA HAWAII

Cocktails

MAI TAI

Beer

MODELO

Ensaladas - Salate

SIERRA NEVADA

Beers

MILLER LITE

Cans

KONA BREWING

Bottled Beers

RED STRIPE

Liquor

FIREBALL

Other Drinks

COCKTAILS

Getting Serious

TITOS

Famous Burgers

JOHNNY APPLESEED

SCOTCH WHISKY / IRISH WHISKEY

JAMESON

Restaurant Category

MEXICAN

Drinks

WINE

BUD LITE BUCKETS

DRINKS

Dolphin Spit Saloon Menu



Dolphin Spit Saloon

75-5629 Kuakini Hwy, Kailua-
Kona I-96740-1664, United
States

Opening Hours:

Monday 10:30-02:00
Tuesday 10:30-02:00
Wednesday 10:30-02:00
Thursday 10:30-02:00
Friday 10:30-02:00
Saturday 10:30-02:00
Sunday 10:30-02:00

Made with menulist.menu

