

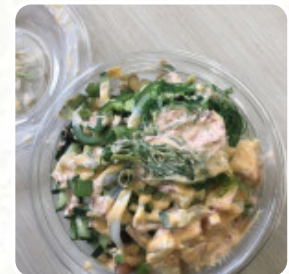


Aloha Poke Co. Menu

<https://menulist.menu>

1333 19th St NW, Washington DC I-20036-1605, United States

+12028646416 - <http://www.alohapokeco.com/>



The menu of Aloha Poke Co. from Washington DC includes 17 dishes. On average, dishes or drinks on the card cost about \$4.9. The categories can be viewed on the menu below. What [Sinmidele Badero](#) likes about Aloha Poke Co.:

This is my go to sushi spot. I live in the neighborhood and come at least once a week. Rajesh is an incredible sushi chef. He's so friendly and I come for him to make his specialty rolls. I would say this is the best place to get sushi in Baltimore city. Note that downstairs is more of a dive bar louder music and turn up vibe and the upstairs bar is more of a quiet and intimate vibe. Would definitely recommend for ca... [read more](#). The restaurant also offers the possibility to sit outside and eat and drink in pleasant weather. What [Asher](#) doesn't like about Aloha Poke Co.:

I ordered the kahuna size bowl, but instead when I got home and opened the bag I was suprised to see the big size bowl. Extremely disappointed that I didn't get what I paid for. [read more](#). During meals, a refreshing drink is essential. In this **gastropub**, you will find not only flavorful dishes, but also a large and comprehensive variety of good beers and other alcoholic drinks that compliment the food, Particularly scrumptious are also the Sushi and specialties like Inside-Out from this restaurant. At the bar, you can still relax after the meal (or during it) with an alcoholic or non-alcoholic drink, By availing of the **catering service** from Aloha Poke Co. in Washington DC, the dishes can be obtained at home or at the celebration.

Aloha Poke Co. Menu



Pizza

PIZZA HAWAII

Snacks

STACY'S PITA CHIPS \$2.0

Drinks

COCONUT WATER \$3.0

Bowl

BUILD YOUR OWN BOWL \$8.3

Japanese specialties

MISO SOUP \$3.0

Combos

VOLCANO BOWL \$8.3

Small Plates

VEGETABLE CHIPS \$2.0

Green Iced Teas

HONEY GREEN ICED TEA \$3.0

Iced Tea & Lemonade

POMEGRANATE ICED TEA \$3.0

These types of dishes are being served

SALAD

Main courses

SUSHI

CRAB

Bowls

CRUNCH BOWL \$8.3

ALOHA BOWL \$8.3

Ingredients Used

TRAVEL

AVOCADO

MEAT

Aloha Poke Co. Menu



Aloha Poke Co.

1333 19th St NW, Washington
DC I-20036-1605, United States

Opening Hours:

Monday 10:00 -22:00
Tuesday 10:00 -22:00
Wednesday 10:00 -22:00
Thursday 10:00 -22:00
Friday 10:00 -22:00
Saturday 10:00 -22:00
Sunday 10:00 -22:00

Made with menulist.menu

 gallery image

