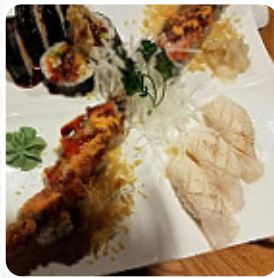
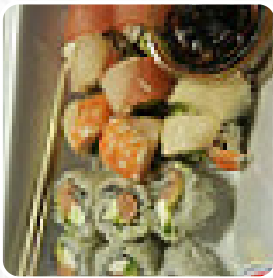




Sushi Land Menu

<https://menulist.menu>
2500 West Hill Road, Flint, MI 48507, United States
(+1)8109648777 - <https://www.sushilandmi.com>



The Menu of **Sushi Land** from **Flint** includes about 17 different menus and drinks. On average, you pay for a dish / drink about \$9.1. What [User](#) likes about Sushi Land:

It's just take-out, website order is PREFERRED, but they have a menu when you go in Always fresh, glue is 4/5 depends on what you get, but fantastic decisions so that I try to get something new every time. The owner is super sweet of a man, please support You this place! I can't wait until it opens again, the interior is a lot a great appearance. [read more](#). What [User](#) doesn't like about Sushi Land:

Food was good. Server was friendly but left us waiting a while to order while he was eating. We weren't in a rush but did expect service to be a bit faster since there was only one other table that left shortly after we got there. [read more](#). **scrumptious sushi (e.g., Nigiri and Inside-Out)**, as well as in numerous additional variations, are prepared for you by [Sushi](#) Land from Flint, with fresh ingredients like fish, vegetables and meat.

Sushi Land Menu



Alcoholic Drinks

BEER

Nigiri

CRAB NIGIRI \$2.2

King California Rolls

DRAGON ROLL \$11.9

Main courses

SUSHI

Maki

AAC ROLL \$5.2

Extras

WASABI

Sandwiches

CALIFORNIA SANDWICH

Sushi

CALIFORNIA ROLL \$5.0

Appetizer

TEMPURA

Inside Out Rolls

ASPARAGUS ROLL \$4.2

Special Roll

CRUNCH BURRITO ROLL \$11.9

Popular Items

ANGRY CALIFORNIA ROLL \$6.0

Drinks

DRINKS

Nigiri (Two Pieces)

FLYING FISH ROE NIGIRI \$2.8

Ingredients Used

SHRIMP

Combos

TUNA LOVER COMBO \$20.9

Sushi Land Menu



SALMON LOVER COMBO \$20.9

Sushi Land Menu



Sushi Land

2500 West Hill Road, Flint, MI
48507, United States

Opening Hours:
Friday 04:00-20:30

 gallery image