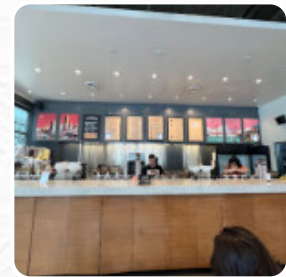


Philz Coffee Menu

<https://menulist.menu>

801 S Hope St Unit A, Los Angeles, CA 90017, United States

+12132132616 - http://www.philzcoffee.com/?utm_source=gmb&utm_medium=yext



Here you can find the [menu](#) of **Philz Coffee** in Los Angeles. At the moment, there are **8** menus and drinks on the menu. You can inquire about **seasonal or weekly deals** via phone. What [User](#) likes about Philz Coffee: philz is always a safe and good choice to coffee, bake, sit and chat! it's such a good coffee shop. my friend and I went to philz to drink a quick coffee. the minze mojito never disappointed that I had it with caffeine and caffeine, both are really great. original taste. their specificity is the minz mojito or the rosé so definitiw try these when they come here! I tried the lemons poppy brot and it was small, but als... [read more](#). Philz Coffee from Los Angeles is a comfortable café, where you can have a small snack or cake with a *warm coffee* or a *hot chocolate*, The guests of the restaurant also consider the comprehensive selection of differing coffee and tea specialities that the establishment offers.

Philz Coffee Menu



Sandwiches & Hot Paninis

BURRITO

Main courses

TOPPINGS

Sandwiches

CALIFORNIA SANDWICH

Dessert

DONUTS

Cocktails

MOJITO

Breakfast Combos

BREAKFAST BURRITO

Drinks

DRINKS

Speciality Beverages

COLD BREW

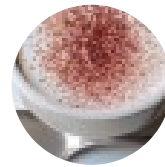
Shisha

MINT

McCafé® Coffees

ICED COFFEE

Coffee



DECAF

MOCHA

COFFEE

Ingredients Used



CHILI

MILK

HONEY

BEANS

Philz Coffee Menu



Philz Coffee

801 S Hope St Unit A, Los Angeles, CA 90017, United States

Opening Hours:
Saturday 06:30 -18:00
Sunday 06:30 -18:00
Monday 06:00-18:00
Tuesday 06:00-18:00
Wednesday 06:00-18:00
Thursday 06:00-18:00
Friday 06:00-18:00

Made with menulist.menu

