

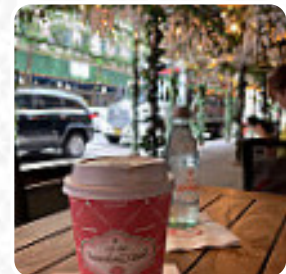
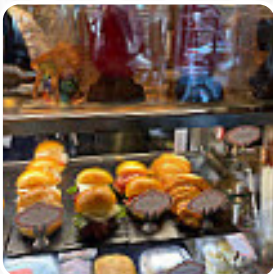


Sant Ambroeus Coffee At Loews Regency Menu

<https://menulist.menu>

540 Park Ave, New York, NY 10021, USA, United States

+12123394051 - <https://www.santambroeus.com/pages/loews-regency-hotel>



Here you can find the [menu](#) of **Sant Ambroeus Coffee At Loews Regency** in New York. At the moment, there are 17 courses and drinks on the card. You can inquire about *changing offers* via phone. What [User](#) likes about Sant Ambroeus Coffee At Loews Regency:

coffee shop in style of Italian style, with maize-settis level, bretzel, etc., decent coffee and a wide range of beautiful sandwiches. while sandwiches are small, two could eat if big appetit! quality of the ingredients is high. the mozzarella and tomatensandwich was great. the caffe is located at the hotel loews, cheap for the central park. cute table under florals soonachin for outside seats. [read more](#). When the weather is pleasant you can also eat and drink outside. What [User](#) doesn't like about Sant Ambroeus Coffee At Loews Regency: the person responsible for the meal was very rude. when he gave us the meal, he had a bad attitude and rolled his eyes. After he gave us the meal, he turned around the head and complained to others. the overall experience was very rude. we will never recommend to go friends because after going it will make the mood very bad. Moreover, the Matcha-Latte was tasteless, and it tasted like ice water at all. [read more](#). At the establishment you can enjoy the delicious fine meals while enjoying the breathtaking view of the nearby landmarks, There are also delicious **South American** dishes in the menu. You have a big birthday party and want to enjoy the food at home? With the in-house catering service, that's easily doable, For you, the dishes are normally prepared in the shortest time and fresh.

Sant Ambroeus Coffee At Loews Regency Me



Süße Desserts

CREPES

Dessert

MATCHA

Little things

CROISSANT

Sweets & Desserts

CHOCOLATE CROISSANT

Hot Drink

HOT CHOCOLATE

Nut Milks

ALMOND MILK

Restaurant Category

ITALIAN

Coffee

COFFEE

MATCHA LATTE

These types of dishes are being served

PANINI

ICE CREAM

Ingredients Used



CHOCOLATE

TUNA

HONEY

MILK

MOZZARELLA PASTA

TOMATE

Sant Ambroeus Coffee At Loews Regency Me



Sant Ambroeus Coffee At Loews Regency

540 Park Ave, New York, NY
10021, USA, United States

Opening Hours:

Monday 07:00 -17:00
Tuesday 07:00 -17:00
Wednesday 07:00 -17:00
Thursday 07:00 -17:00
Friday 07:00 -17:00
Saturday 08:00 -17:00
Sunday 08:00 -17:00

Made with menulist.menu

