

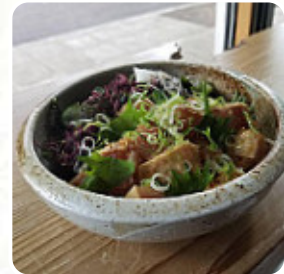


## ***Nimblefish Menu***

<https://menulist.menu>

1524 Southeast 20th Avenue, Portland, OR 97214, United States

+15037194064 - <http://www.nimblefishpdx.com/>



A comprehensive [menu](#) of Nimblefish from Portland covering all 17 courses and drinks can be found here on the card. For seasonal or weekly deals, please get in touch via phone or use the contact details provided on the website. What [User](#) likes about Nimblefish:

Intimate experience with your own private [sushi](#) cook for a few hours. The Grandmakase experience is exceptional, with cooking prepare each course as a unique piece of edible art. At the end of the performance you can choose more from your favorite fish Art a la cart. Combine with a few light beers and your best friend for a night you will not forget soon. [read more](#). What [User](#) doesn't like about Nimblefish:

Actually, I was quite disappointed in this restaurant. Eating here is fishy. From the last reviews it seems that the cook isn't often here, so maybe that's the reason? Tamago is good, but it costs extra; not included in Omakase. Maybe I had expected too much, but only FYI, I feel that this is an overestimated place. [read more](#). If you want to spoil your palate with a bit of culinary flair, this is the place to be: The successful Asian fusion cuisine of the Nimblefish from Portland - a delicious combination of proven and the unexpected, Moreover, the delicious desserts of the house shine not only in the eyes of our little guests. The preparation of the meals is done authentically Asian, and **easily digestible Japanese dishes** are being made with lots of freshly harvested vegetables, fish and meat.

# ***Nimblefish Menu***



## ***Main courses***

SUSHI

## ***Side dishes***

FRENCH FRIES

## ***Starters & Salads***

FRIES

## ***Fingerfood***

CALAMARES

## ***Beilagen und Extras***

SOJASAUCE

## ***Sonstiges***

SASHIMI

## ***Omlette***

TAMAGO

## ***Noodle***

RAMEN

## ***Pop Tarts***

BLUEBERRY

## ***Sushi Or Sashimi***

OCTOPUS

## ***Ingredients Used***

TRAVEL

## ***Drinks***

SAKE

DRINKS

## ***Restaurant Category***

FRENCH

DESSERT

***These types of dishes are  
being served***

FISH

SOUP

# *Nimblefish Menu*



## *Nimblefish*

1524 Southeast 20th Avenue,  
Portland, OR 97214, United  
States

### **Opening Hours:**

Monday 05:00 -21:00  
Tuesday 05:00 -21:00  
Wednesday 05:00 -21:00  
Thursday 05:00 -21:00  
Friday 05:00 -21:00  
Saturday 05:00 -21:00  
Sunday 05:00 -21:00

Made with [menulist.menu](https://menulist.menu)

