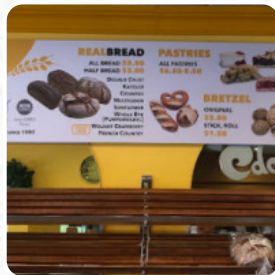
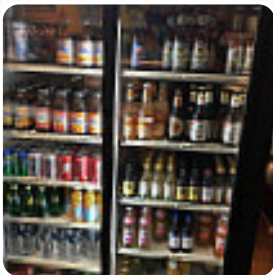




## ***Edelweiss European Bakery Cafe Menu***

<https://menulist.menu>

2909 E Commercial Blvd, Fort Lauderdale, Florida, USA, 33308, United States  
+19547721529 - <http://www.edelweissbakeryfl.com>



A **comprehensive menu** of Edelweiss **European Bakery Cafe** from Fort Lauderdale covering all 17 dishes and drinks can be found here on the card. For seasonal or weekly deals, please get in touch via phone or use the contact details provided on the website. What **User** likes about Edelweiss **European Bakery Cafe**: Very cool Deli dining with a wide selection of treats and meals. We arrived as a party of 8 that is somewhat larger than a group, then I think they will be used. They treated it very well and the whole food was great. With price and taste, this place meets the place. The pictures say everything. You really can't go wrong. The food is delicious, but every meal could really be a pastry they do. [read more](#). At Edelweiss **European Bakery Cafe** in Fort Lauderdale, they provide you with solid German dishes with flavorful side dishes like *fries* and salads, Furthermore, you can get sweet treats, cake, simple snacks and chilled refreshments and hot drinks here. Not to be left out is the extensive selection of **coffee and tea specialties** in this restaurant, here they serve a comprehensive brunch in the morning.

# *Edelweiss European Bakery Cafe Menu*



## *Süße Desserts*

TIRAMISU

## *Schnitzel*

SCHNITZEL

## *Breakfast*

BREAKFAST SANDWICH

## *Coffee*

COFFEE

## *Drinks*

DRINKS

## *Restaurant Category*

DESSERT

*These types of dishes are being served*

DESSERTS

BREAD

PANINI

## *Ingredients Used*



HAM

EGG

CHEESE

BACON

SENF

APPLE

EGGS

CHOCOLATE

# ***Edelweiss European Bakery Cafe Menu***



## ***Edelweiss European Bakery Cafe***

2909 E Commercial Blvd, Fort  
Lauderdale, Florida, USA, 33308,  
United States

**Opening Hours:**  
Tuesday 08:00-15:00  
Wednesday 08:00-15:00  
Thursday 08:00-15:00  
Friday 08:00-15:00  
Saturday 08:00-15:00

 gallery image

